



# KS5 HEALTH AND SOCIAL CARE DIPLOMA CURRICULUM MAP 2023-25

## FURTHER STUDY

A level Health and social care

## CAREER PATHS

University: Nursing, physiotherapist, psychology, paramedic sciences, social care

## SKILLS

Communication, analysis, application of knowledge, time management,

Final overall results

External moderation

Assessment: Feedback and Internal standardisation of assignments.

Assessment: Feedback and Internal standardisation of assignments.

Assessment: External moderation May and June

**YEAR 13**

### Unit 06: Personalisation and person-centred approaches to care

- LO3. Understand methods used to implement a person-centred approach
- LO4. Know how to plan and conduct review meetings using a person-centred approach

### Unit 14: Long term physiological conditions

- LO4. Know about end of life care

### Unit 06: Personalisation and person-centred approaches to care

- LO1. Understand personalisation in health and social care
- LO2. Understand what is meant by a person-centred approach to care

### Unit 14: Long term physiological conditions

- LO3. Be able to support individuals with long-term physiological conditions to plan their care and support

Assessment: Feedback and Internal standardisation of assignments.

Assessment: Unit 7: External exam - January

Assessment: Assessment: End of topic test, Assessment: Feedback and Internal standardisation of assignments.

### Unit 09: Supporting people with disabilities

- LO1. Know the types and causes of learning disabilities
- LO2. Understand the difficulties that may be experienced by individuals with learning disabilities

LO3: Be able to support individuals with learning disabilities to plan their care and support

### Unit 5 infection control

- 1. Understand infection control in health and social care

Assessment: Feedback and Internal standardisation of assignments.

### Unit 16: Supporting people with dementia

- 3. Be able to support individuals with dementia to plan their care and support

### Unit 5 infection control

- LO4. Understand the role of the health and social care worker in controlling infection

### Unit 16: Supporting people with dementia

- LO3. Be able to support individuals with dementia to plan their care and support

### Unit 5 infection control

- LO3. Be able to control the spread of infection

### Unit 16: Supporting people with dementia

- LO1. Understand types of dementia and the impact of dementia and diagnosis on individuals
- LO2. Know legislation and frameworks which support the care of individuals with dementia

### Unit 5 infection control

- 2. Know the chain of infection

**YEAR 12**

### Unit 7: Safeguarding

- LO4. Understand how to deal with suspected abuse and disclosures of abuse
- 5. Understand working strategies and procedures for the safeguarding and protection of adults, young people and children
- LO1. Understand types and signs of abuse
- LO2. Understand factors which may lead to abusive situations
- LO3. Understand legislation, regulatory requirements and guidance which govern the safeguarding of adults, young people and children

### Unit 14: Long term physiological conditions

- LO2. Understand effects of longterm physiological conditions
- LO1. Know what long-term physiological conditions are; their causes and symptoms

## SUBJECT SKILL

Empathy, understanding, reflection

## SUBJECT SKILL

Communication, literacy, language

## SUBJECT SKILL

Application of knowledge to individuals and settings

## SUBJECT SKILL

Evaluation, Analysis.



# KS5 HEALTH AND SOCIAL CARE DIPLOMA CURRICULUM MAP 2024-26

## FURTHER STUDY

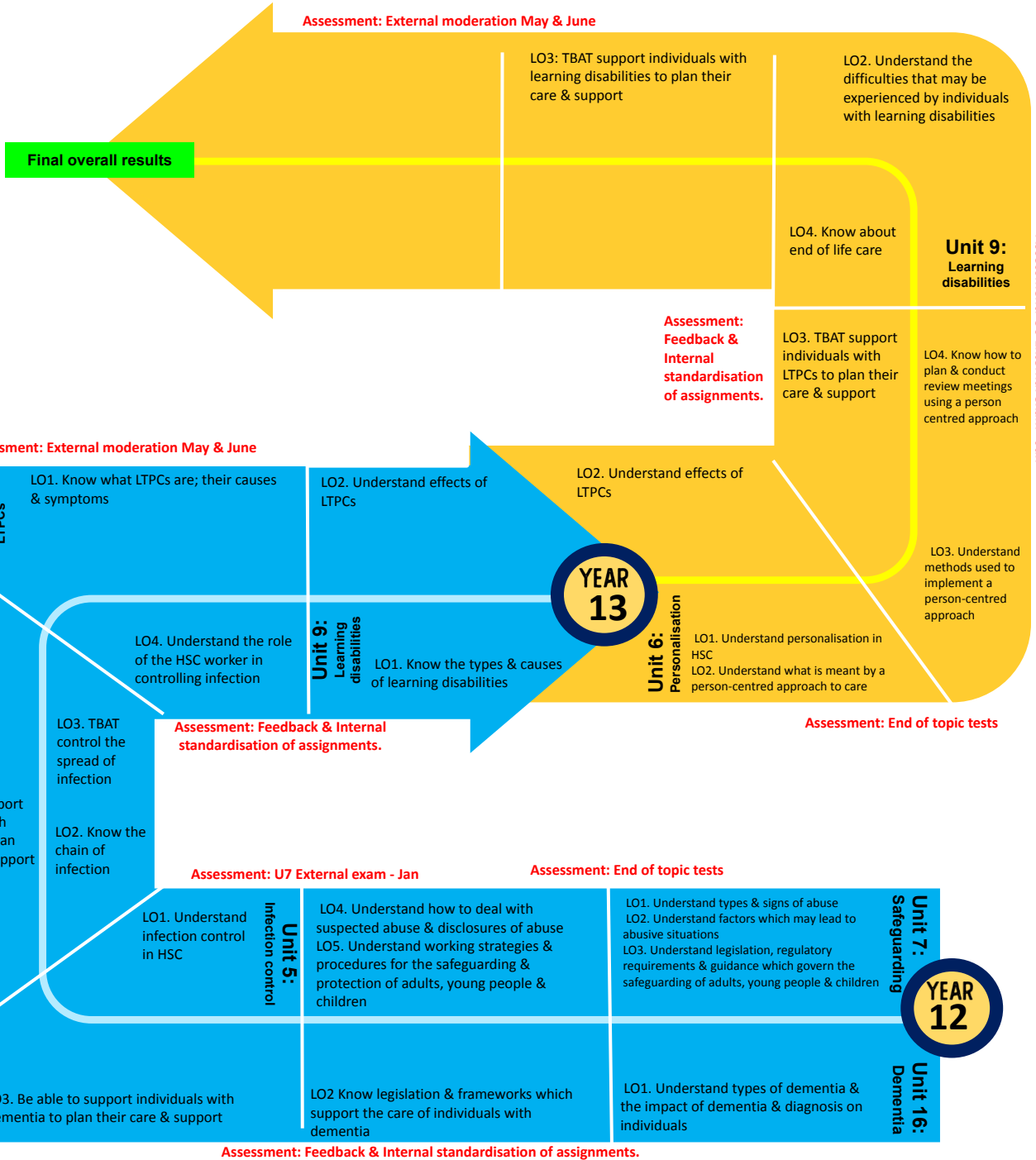
A level Health and social care

## CAREER PATHS

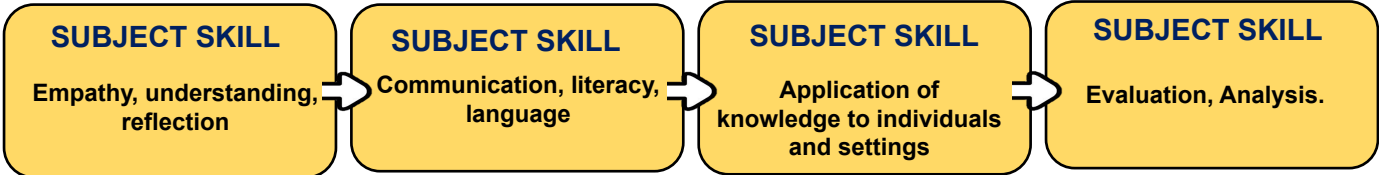
University: Nursing, physiotherapist, psychology, paramedic sciences, social care

## SKILLS

Communication, analysis, application of knowledge, time management,



Assessment: U6 External exam - Jan





# KS5 HEALTH AND SOCIAL CARE EXTENDED CERTIFICATE CURRICULUM MAP 23-25

## FURTHER STUDY

A level Health and social care

## CAREER PATHS

University: Nursing, physiotherapist, psychology, paramedic sciences, social care

## SKILLS

Communication, analysis, application of knowledge, time management,

Assessment: End of topic test, internal standardisation of assignments.

External exam: Unit 4

External moderation: Unit 13

Unit 4: Anatomy and Physiology in Health and social care

- LO6: Understand the sensory systems, malfunctions and their impact on individuals

- 4. Understand the stages of pregnancy and birth and the post-natal care of the mother
- 5. Understand the care and development of the baby in the first year of life

Unit 4: Anatomy and Physiology in Health and social care

- LO5: Understand the control and regulatory systems, malfunctions and their impact on individuals

Unit 13: Sexual Health

- 2. Understand the importance of pre-natal health and the process of conception
- 3. Know the factors which could affect health in pregnancy and the success of the birth

Unit 4: Anatomy and Physiology in Health and social care

- LO3: Understand the digestive system, malfunctions and their impact on individuals
- LO4: Understand the musculoskeletal system, malfunctions and their impact on individuals

Unit 13: Sexual Health

- 1. Understand sexual health and contraception

Assessment: Unit 3: External examination

Unit 3: Health Safety and security in Health and social care

- LO3: Roles and responsibilities
- LO4: Response to incidents and emergencies

Unit 4: Anatomy and Physiology in Health and social care

- LO2: Understand the respiratory system, malfunctions and their impact on individuals

Unit 1: Building positive relationships in Health and social care

- Be able to use communication skills effectively to build positive relationships in a health, social care or child care environment

Unit 10: Nutrition for health

- LO2: Understand the functions of nutrients
- LO3: Understand factors which influence nutritional health

Unit 1: Building positive relationships in Health and social care

Consolidation for moderation

Unit 10: Nutrition for health

- LO3: Understand factors which influence nutritional health
- LO4: Be able to make recommendations to improve nutritional health

Unit 10: Nutrition for health

- LO4: Be able to make recommendations to improve nutritional health

Consolidation for moderation

Unit 3: Health Safety and security in Health and social care

- LO1: potential hazards
- LO2: Legislation, policies and procedures

Unit 4: Anatomy and Physiology in Health and social care

- LO1: Understand the cardiovascular system, malfunctions and their impact on individuals

YEAR 13

Assessment: moderation of units

Assessment: End of topic test, internal standardisation of assignments.

Unit 1: Building positive relationships in Health and social care

- LO3: Understand how a personcentred approach builds positive relationships in health, social care or child care environments

Unit 10: Nutrition for health

- LO1: Know nutritional and diet guidelines

Unit 2: Equality and diversity in Health and social care

- Consolidation of knowledge

Unit 1: Building positive relationships in Health and social care

- LO2: Understand the factors that influence the building of relationships

Unit 2: Equality and diversity in Health and social care

- LO3: legislation and national initiatives promote antidiscriminatory practice
- LO4: Understand how equality, diversity and rights in health, social care and child care environments are promoted.

Unit 1: Building positive relationships in Health and social care

- Understand relationships in health, social care or child care environments

Unit 2: Equality and diversity in Health and social care

- Understand concepts of equality, diversity and rights and how these are applied in the context of health, social care and child care environments
- LO2: Understand the impact of discriminatory practices on individuals in health, social care and child care environments

YEAR 12

Assessment: Unit 2 external examination

Assessment: End of topic test, internal standardisation of assignments.

Assessment: End of topic test, internal standardisation of assignments.

SUBJECT SKILL

Empathy, understanding, reflection

SUBJECT SKILL

Communication, literacy, language

SUBJECT SKILL

Application of knowledge to individuals and settings

SUBJECT SKILL

Evaluation, Analysis.



# KS5 HEALTH AND SOCIAL CARE EXTENDED CERTIFICATE CURRICULUM MAP 24-26

## FURTHER STUDY

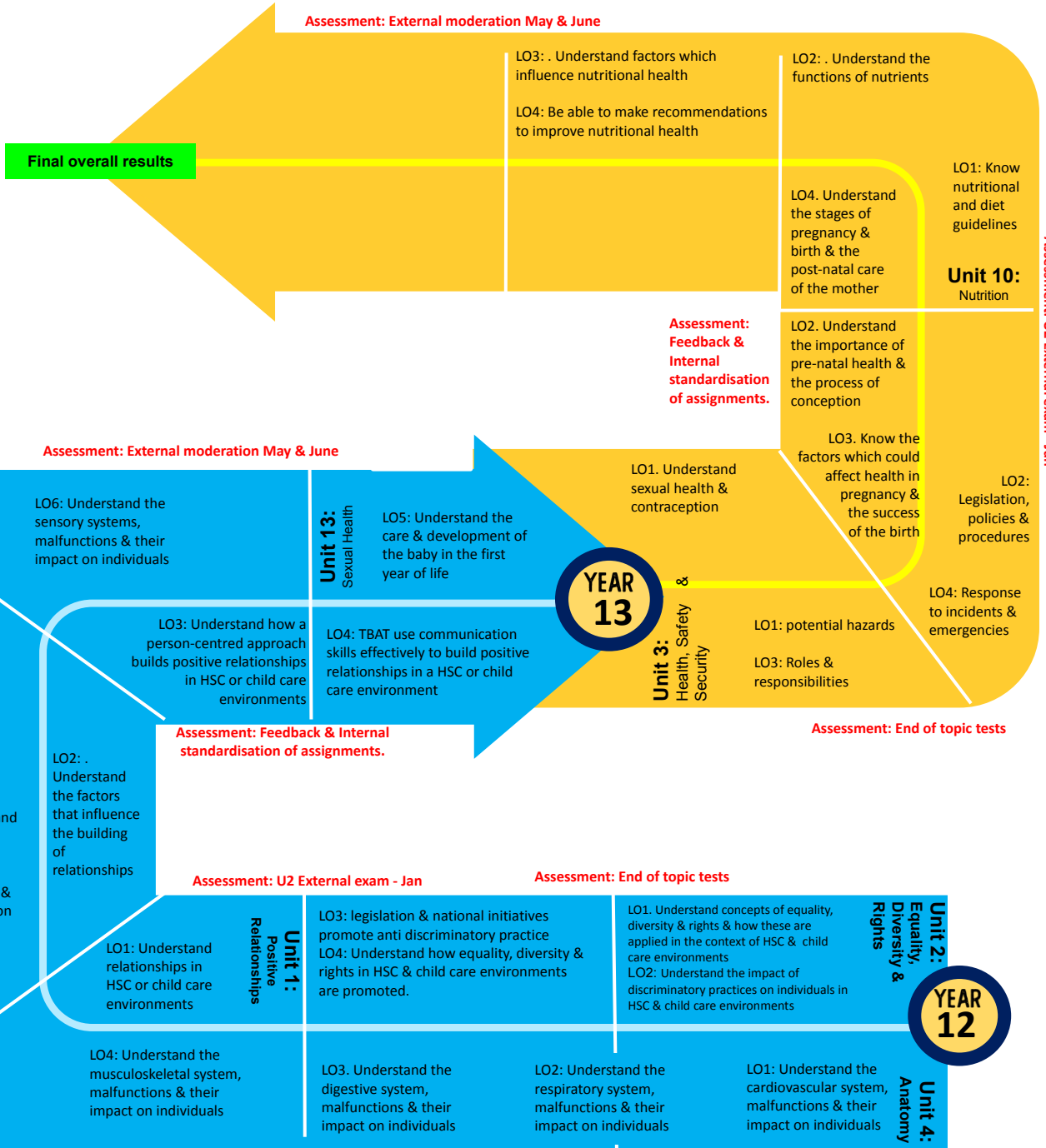
A level Health and social care

## CAREER PATHS

University: Nursing, physiotherapist, psychology, paramedic sciences, social care

## SKILLS

Communication, analysis, application of knowledge, time management,



Assessment: U2 External exam - Jan

### SUBJECT SKILL

Empathy, understanding, reflection

### SUBJECT SKILL

Communication, literacy, language

### SUBJECT SKILL

Application of knowledge to individuals and settings

### SUBJECT SKILL

Evaluation, Analysis.