



**TL** Proud to be part of the  
Transforming Lives Educational Trust

# ASHLAWN SCHOOL

Newsletter Issue Date:  
Friday 28 January 2022

Principal:  
Mrs S Evans

Tel: 01788 573425

Email: [info@ashlawn.org.uk](mailto:info@ashlawn.org.uk)

Website: [www.ashlawn.org.uk](http://www.ashlawn.org.uk)

## Message from the Principal

Thank you to everyone who has contributed to our *Big Ashlawn Parent Survey* so far. We have over 1000 families at Ashlawn and to date we have had 246 responses. We would like to think that the majority of families would participate in the survey and ask you to please take a few minutes to respond. The link is [HERE](#). We will extend the deadline to Monday 31 January.

This week we have been reflecting on the lessons we learn from the Holocaust during assemblies. 27 January is Holocaust Memorial Day – the day when we remember the millions of people murdered in the Holocaust, under Nazi persecution, and in the genocides which followed in Cambodia, Rwanda, Bosnia and Darfur. 27 January was chosen to commemorate the date that Auschwitz concentration camp was liberated in 1945. During the Holocaust six million Jewish people (including one and a half million children) were killed, along with millions from other persecuted groups. Over a million people were killed at Auschwitz alone. The theme this year is **One Day**. A message of hope that one day we will live in a world with no risk of genocide.

We teach our students about the Holocaust so that they can learn what intolerance and hate can cause. We teach them that it is everyone's responsibility to challenge our friends and acquaintances when we hear language that is intolerant and disrespectful. Not everyone will agree, but we teach that important British fundamental value of respect and tolerance for people who have different beliefs than us. Sadly, we have very few survivors of the Holocaust still alive, so as parents, carers and educators it is our responsibility to continue to share these lessons with our children.

If you would like to speak to your child/ren about the Holocaust or other episodes of genocide, you will find useful resources by following this link: [www.het.org.uk/exploring-the-holocaust-home-learning-pack](http://www.het.org.uk/exploring-the-holocaust-home-learning-pack)

I would also recommend the following if you would like to introduce your child/ren to reading related to the Holocaust: *The Dairy of a Young Girl*, by Anne Frank (age 11+), *The Boy in the Striped Pyjamas* (age 12+) and *The Tattooist of Auschwitz* (The Young Adult edition is suitable for 14+.)

Siobhan Evans

## College Achievement Points

Congratulations to the top scoring pupils from each college this week!

	Webb Ellis	Evans	Brooke	Ruddock	Livermore
<b>Year 7</b>	Thomas W	Thomas N	Autumn C	Ashley E	Rayfo K
<b>Year 8</b>	Harry P	Manav L	Olivia W	Freddie W	Lukas F
<b>Year 9</b>	Laurence H	Declan M	Jannah N	Mohammed A	Zack T
<b>Year 10</b>	Malena W	Joshua B	Jack W	Denis I	Danesh C
<b>Year 11</b>	Emily B Roland T	Chloe G	Kezia H Poppy M	Gabriel H	Luke M Akai S
<b>Year 12</b>	Larissa B	Melissa D Amber P	James B	Naomi D	Charlie N
<b>Year 13</b>	Alex A Eve A	Rui M Chloe O Ben W	Jacob K	Emelia D	Jacob B Taranbir S





# ASHLAWN SCHOOL

Newsletter Issue Date:  
Friday 28 January 2022

Principal:  
Mrs S Evans

Tel: 01788 573425

**TL** Proud to be part of the  
Transforming Lives Educational Trust

Email: [info@ashlawn.org.uk](mailto:info@ashlawn.org.uk)

Website: [www.ashlawn.org.uk](http://www.ashlawn.org.uk)

28TH JAN 22

## SILLY CHALLENGE OF THE WEEK

## MOST TEENAGE THING YOU DID THIS WEEK

UPLOAD ENTRIES TO THE ASSIGNMENT ON  
YOUR COLLEGE GOOGLE CLASSROOM



2 ACHIEVEMENT POINTS PER  
ENTRY. WINNERS WILL  
RECEIVE 5 ACHIEVEMENT  
POINTS

## Competition Spotlight

Here is one of the many college competitions for this spring term. You will find all the details on your college google classrooms.

### German College Competition

Make a model of something related to Germany or German culture (e.g. famous person, food, landmark) using a material of your choice (e.g. recycled materials, food, paper, clothes)





# ASHLAWN SCHOOL

Newsletter Issue Date:  
Friday 28 January 2022

Principal:  
Mrs S Evans

Tel: 01788 573425

**TL** Proud to be part of the  
Transforming Lives Educational Trust

Email: [info@ashlawn.org.uk](mailto:info@ashlawn.org.uk)

Website: [www.ashlawn.org.uk](http://www.ashlawn.org.uk)

## Meet our Governors

**Duncan Mills:**

**Chair of the  
Improvement  
Management Board**



I am Duncan Mills and I chair the Ashlawn School AIM Board. AIM stands for Academy

Improvement Management. In multi-academy trusts governance is different to community schools. In our trust (TLET) the Ashlawn AIM Board is the local governance committee for the school and reports to the TLET Board of Trustees who are accountable for all of the schools in the trust.

I began my working career as a teacher and have worked in education and training, in one form or another, throughout. I have experience of working for a local authority and, most recently, as the CEO of an academy trust. I live in Rugby and, like my colleagues on the AIM Board, wish to play a part in the local community and to see the school continue to be successful. We are volunteers, but have a meaningful role to play in the organisation of the school. As well as supporting the school, we are expected to also challenge and ensure the quality of education is maintained and continued improvement takes place.

The Ashlawn AIM Board meets as a full group at least once every term. However, AIM Board members (known as partners) undertake training, have link responsibilities for areas of the school that involve visits and get involved in other aspects of the school life. Obviously, the pandemic has restricted some of this.

The AIM Board partners are from different backgrounds, each bringing their own set of experiences and skills to the group. Not all partners are from an education background. TLET are looking for volunteers to join us at Ashlawn and in the other schools that make up the trust. If you are interested, please contact the school for details.

## Uniform Sale

Our next used uniform sale is taking place on Saturday 29 January from 10 am until 11.30 am located to the left of the main reception in the school canteen area. Please remember that our sales are only as good as the variety of donations we receive. We look forward to seeing you there.

## Medication in School

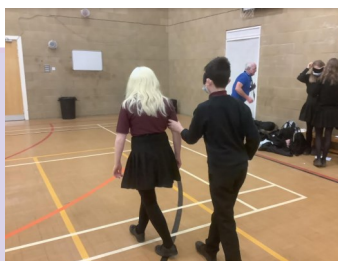
Any students who bring medication to school must take it to be stored in the first aid room. The only exception being two paracetamol per person.

## Sight Guide Training

A number of our year 8 students volunteered to take part in a 'Sight Guide' training session. Led by Paul and Sharon from Exhall Grange the purpose of the training was to equip our young people with the skills to help blind or partially sighted people in getting around. With Year 8 Bushcraft coming up these skills will be used to support one of our students to access the whole residential trip and take part in all the activities there are on offer.

The feedback from Paul and Sharon at the end of the session was that...

"The students who attended the training to support their friend being able to access the Bushcraft residential were superb. Sharon and I found them to be polite, interested, and brave - they were a credit to Ashlawn school. We both think they are lucky having friends like that"





**TL** Proud to be part of the  
Transforming Lives Educational Trust

# ASHLAWN SCHOOL

Newsletter Issue Date:  
Friday 28 January 2022

Principal:  
Mrs S Evans

Tel: 01788 573425

Email: [info@ashlawn.org.uk](mailto:info@ashlawn.org.uk)

Website: [www.ashlawn.org.uk](http://www.ashlawn.org.uk)

## Sporting Achievements



### U16s Handball v Harris School

Wow what a game! Harris U16 vs Ashlawn U16. The game was electric from the start and in the first ten minute quarter Ashlawn found themselves 3-1 up with Daniel P scoring 2 and Carum B with 1. The second quarter started with Ashlawn in high spirits but later we came crashing down as we lost the round 4-3 and this was swiftly followed

by a 2-0 loss in the third quarter.

Tension was high as we went into the 4th and final quarter with the score being 7-6 in Harris' favour. Ashlawn needed something big to recover a positive result in their first Handball outing. Position changes and substitutions were made by Mr Ellis who was a motivating and calm presence in the technical area. Ashlawn started the quarter strongly and were 1 up in the first 3 minutes with a stunning finish by Kyle G. Kyle added another in quick succession with a beautiful bottom corner bash to put Ashlawn in front. Harris worked tirelessly and constantly applied pressure to the Ashlawn defence. However, some amazing saves from Ellis S and some 'body on the line' defending saw Ashlawn hold on and run out as 8-7 winners. A superb first game with another to follow on Thursday next week away at Lawrence Sheriff School.

Squad: Ambrose D, Daniel P, Malachy D, Aiden P, Ellis S, Kyle G, Ehimare O, Carum B, Liam T and Riley K.

Man of the Match: Kyle G - Stout defending and two important goals right when we needed them!

Goal Scores: Dan P x2, Carum B x2, Kyle G x2, Mare O x1 and Ellis B x1

Report written by Carum B.



WARWICKSHIRE SCHOOLS CROSS COUNTRY  
CHAMPIONSHIPS  
SATURDAY 22ND JANUARY 2022  
KINETON SCHOOL

**Well done to all students who competed in the Warwickshire Schools Cross Country Championships on Saturday 22nd January. Results from the event are as follows:**

Minor Girls:

34th Orin Martin

Minor Boys:

17th Benjamin Spence

Junior Girls:

Nika Strode - competed

Junior Boys:

15th Oscar Delgado-Major

Inter Girls:

3rd Ava Rogerson

Inter Boys:

5th Thomas Brinkley

Alex Strode - competed

Senior Boys:

2nd Tom Tyler

**Congratulations on all of your fantastic achievements!**





# ASHLAWN SCHOOL

**TL** Proud to be part of the  
Transforming Lives Educational Trust

Newsletter Issue Date:  
Friday 28 January 2022

Principal:  
Mrs S Evans

Tel: 01788 573425

Email: [info@ashlawn.org.uk](mailto:info@ashlawn.org.uk)

Website: [www.ashlawn.org.uk](http://www.ashlawn.org.uk)

## Eating Disorders Awareness Week

Next week is Eating Disorders awareness week and we will be delivering assemblies on this topic to all year groups.

An eating disorder is a mental health illness with physical consequences should that illness become severe and enduring. One of the highest category groups are female adolescents from the age of 11 to 18, however eating disorders do affect males and, although in the minority, it must be acknowledged that they too need help.

If you believe that your child could be suffering with an Eating Disorder then please check the common symptoms below:

- There is a change in your child's personality
- Your child has become withdrawn and tearful
- Your child is faking an illness so they don't have to come to school
- Weight loss is drastic
- Your child is wearing a different style of clothes - baggy.



**Lips**  
Are they obsessive about food?



**Flips**  
Is their behaviour changing?



**Hips**  
Do they have distorted beliefs about their body size?



**Kips**  
Are they often tired or struggling to concentrate?



**Nips**  
Do they disappear to the toilet after meals?



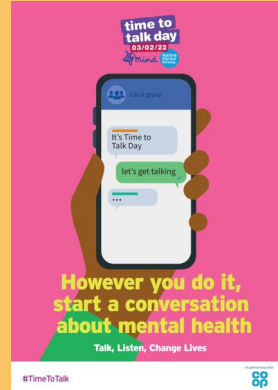
**Skips**  
Have they started exercising excessively?

Other indicators that something could be wrong include:

If you need advice and want to talk to a specialist then please visit [www.beateatingdisorders.org.uk](http://www.beateatingdisorders.org.uk)

This website gives detailed information about the different types of Eating Disorders and shares the stories of how individuals overcome the disease. There is help for parents and friends who are supporting the young person and there is a helpline available 365 days of the year. 0808 801 0677

Please contact your child's Head of Year for more information should you require it. We are here to support you and your child so please keep us informed if your child is currently struggling with an eating disorder and we can keep a close eye on them.



## Time to Talk

Thursday 3rd February is 'Mental Health Awareness Day' and we have a school nurse from COMPASS visiting us all day in school.

The nurse will be meeting students who have a pre-arranged appointment but will also be available for a drop in if your child wishes to speak to them.

The day is about creating supportive communities by having conversations with family, friends, or colleagues about mental health. We all have mental health. By talking about it, we can support ourselves and others.

## Why Time to Talk Day is important?

- One in 4 of us will experience a mental health problem in any given year.
- We want everyone to feel comfortable talking about mental health – whenever they like.
- Talking about mental health reduces helping to create supportive communities where we can talk openly about mental health and feel empowered to seek help when we need it.
- Opening up the conversation about mental health problems is important – by talking about it, we can support ourselves and others.

We will be exploring the myths associated with mental health in form time on Thursday and helplines will be posted around the school site.

As some of you will be aware CAMHS has a long waiting list and the pandemic has contributed to this even more. Whilst we can support students in school we actively encourage you to download the 'Kooth' App if you haven't already done so. Kooth can offer support 24/7 and can direct you to the right services should you need them.

[www.kooth.com](http://www.kooth.com)



# ASHLAWN SCHOOL

**TL** Proud to be part of the  
Transforming Lives Educational Trust

Newsletter Issue Date:  
Friday 28 January 2022

Principal:  
Mrs S Evans

Tel: 01788 573425

Email: [info@ashlawn.org.uk](mailto:info@ashlawn.org.uk)

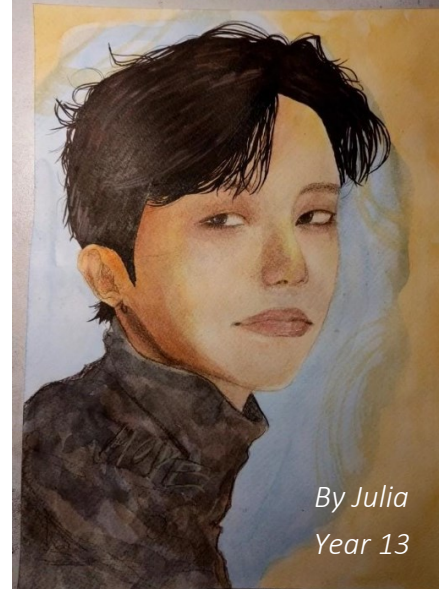
Website: [www.ashlawn.org.uk](http://www.ashlawn.org.uk)



*By Becci Year 13*

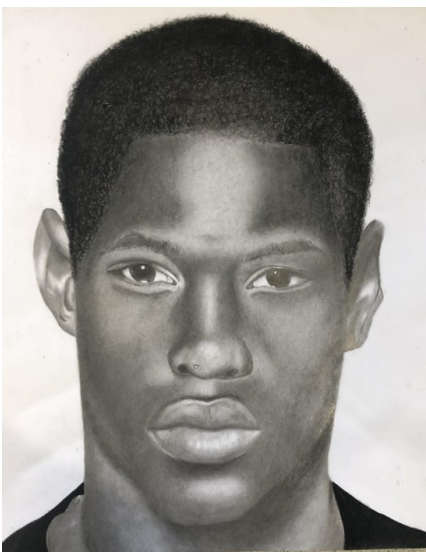


*By Alice Year 10*



*By Julia  
Year 13*

*By Clara Year 13*

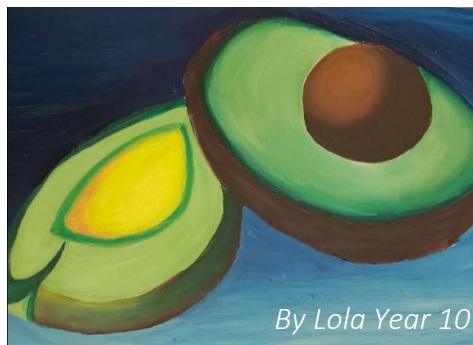


*By Isabelle Year 10*

*By Tilly Year 13*



*By Dylan Year 10*



*By Lola Year 10*



*By Vivien Year 10*

Art of  
the  
week





# ASHLAWN SCHOOL

Newsletter Issue Date:  
Friday 28 January 2022

Principal:  
Mrs S Evans

Tel: 01788 573425

**TL** Proud to be part of the  
Transforming Lives Educational Trust

Email: [info@ashlawn.org.uk](mailto:info@ashlawn.org.uk)

Website: [www.ashlawn.org.uk](http://www.ashlawn.org.uk)

## School Production



Tickets available on ParentPay

Expressive Arts Box Office

£6 Concessions, £8 adults

Ashlawn School East Hall

February 9, 10 & 11 2022 @ 7 pm

[tickets@ashlawn.org.uk](mailto:tickets@ashlawn.org.uk)

## Music Tuition

Music can stimulate and challenge all children and give them a real sense of achievement, it can help create a powerful community bond across the whole school. Please enquire about the peripatetic music tuition lessons available at school in conjunction with Warwickshire Music:

[websterc@ashlawn.org.uk](mailto:websterc@ashlawn.org.uk)



Monday	Tuesday	Wednesday	Thursday	Friday
HMD: Spaghetti carbonara with garlic bread and sweetcorn	HMD: Cottage pie & seasonal veg	HMD: Roast pork, vegetables, potatoes and stuffing	HMD: Sweet and sour chicken balls with rice	HMD: Fish, chips and mushy peas
HMD: Filled pasta, cheese sauce and garlic bread	HMD: Quorn cottage pie and seasonal veg	HMD: Quorn roast, vegetables, potatoes and stuffing	HMD: Sweet and sour Quorn with rice	HMD: Moving Mountain (vegetarian) burger and chips
Jacket potato and tuna	Hot Pasta King Meat	Jacket potato and cheese	Hot Pasta King meat	Jacket potato and beans
Hot cheese and tomato pizza	Hot Pasta King Vegetable	Small flavoured hot chicken baguette	Hot Pasta King vegetable	Hot - chicken fillets
Hot pepperoni pizza	Hot Cheese and bacon toastie	CMD: BLT	Hot Rollover hotdog	CMD: Hot and spicy chicken mayo
CMD - Ham salad	CMD: Chicken bacon mayo		CMD: Coronation chicken	CMD: Ploughmans
CMD - Cheese salad			CMD: Cheese and pickle	



**TL** Proud to be part of the  
Transforming Lives Educational Trust

# ASHLAWN SCHOOL

Newsletter Issue Date:  
Friday 28 January 2022

Principal:  
Mrs S Evans

Tel: 01788 573425

Email: [info@ashlawn.org.uk](mailto:info@ashlawn.org.uk)

Website: [www.ashlawn.org.uk](http://www.ashlawn.org.uk)

## Dates for Your Diary

Term dates for this year can be found on the link below.

Used Uniform Sale **29 January**

Half Term **Monday 21 February – Friday 25 February**

Covid Vaccinations **March 7 & 8**



[Term Dates](#)

## WARWICKSHIRE AND FAMILIES FRONT DOOR

If you have concerns that a child is suffering any form of abuse, neglect or cruelty contact the **Warwickshire Children and Families Front Door (Front Door)** immediately by calling **01926 414144**. Lines are open Monday to Thursday 8.30am - 5.30pm, Friday 8.30am - 5.00pm.

If you need to get in touch out of usual office hours, please contact the **Emergency Duty Team** immediately by calling **01926 886922**.

## POLICE

If you think that a child is at immediate risk, contact the **police immediately by calling 999**.

**Call 101** for non-emergencies.

## CHILDLINE

Childline is a free, private and confidential service where you can talk about anything. Trained counsellors are there to support anyone under 19 with any issue. **Call 0800 1111**



## SAMARITANS

If you're having a difficult time and want to talk to someone confidentially, call the Samaritans on **116 123** (24 hours a day) or If you would prefer to text, you can **text Shout** to **85258** if you're experiencing a personal crisis, are unable to cope and need support.



## RUGBY FOOD BANK

This service provides emergency food for families and individuals in crisis. There are various pickups but the closest for Rugby is next to the Benn Hall.

Please email [www.rugby.foodbank.org.uk](http://www.rugby.foodbank.org.uk) or phone 07557680019



## FINANCIAL HARDSHIP

If you are in financial crisis please call the free national helpline - Help through Hardship, on **0808 2082138** (open Monday to Friday, 9am-5pm, closed on public holidays) to talk confidentially with a trained Citizens Advice adviser. This phone call is free. They can help address your crises and provide support to maximise your income, help you navigate the benefits system, and identify any additional grants you could be entitled to. If needed, they'll issue you with a voucher so you can get an emergency food parcel from your local food bank.





**TL** Proud to be part of the  
Transforming Lives Educational Trust

# ASHLAWN SCHOOL

Newsletter Issue Date:  
Friday 28 January 2022

Principal:  
Mrs S Evans

Tel: 01788 573425

Email: [info@ashlawn.org.uk](mailto:info@ashlawn.org.uk)

Website: [www.ashlawn.org.uk](http://www.ashlawn.org.uk)

## **Safeguarding Advice**

What to do if you are worried about your, or someone else's safety.

Tell a trusted adult at school.

We are here to help, and our team of Designated Safeguarding Leads will provide support.

You can also call on the following number: 01788 573425.

If you are in immediate danger then phone 101 or 999.

Here are some other ways things you can get the help you need:

- Tell a trustworthy family member or safe adult who may be able to help you
- Call Childline on 0800 1111 and talk through how you are feeling and your concerns
- Email the Designated Safeguarding Leads at school at [safeguarding@ashlawn.org.uk](mailto:safeguarding@ashlawn.org.uk)
- Speak to Young Carers if you are looking after someone at home. Tel: 02476 217740
- Look online for support from the Family Information Service at [www.warwickshire.gov.uk/childrenandfamilies](http://www.warwickshire.gov.uk/childrenandfamilies)
- If you feel unsafe or in danger call the council helpline on 01926 414144

If you are struggling with your mental health and want some reassurance and advice, then contact your form tutor or Head of Year. They would love to hear from you and they will help alleviate your worries.

**Mrs Pountney**

**Assistant Principal and Designated Safeguarding Lead**

**Safeguarding is  
Everyone's  
Responsibility**

The Family Information Service can provide a wide range of information/support/ referrals for families in Warwickshire either via our helpline or on a face to face basis.

FIS Brokerage Service is a 1:1 early intervention service which can be used to support families with children age 0 to 25 living in Warwickshire to access services where there are barriers and/or complex needs.

To access this service please contact them using the methods below:

[fis@warwickshire.gov.uk](mailto:fis@warwickshire.gov.uk)

- [Twitter – @WarksFIS](https://twitter.com/WarksFIS)
- [Facebook – Warwickshire Family Information Service](https://www.facebook.com/Warwickshire-Family-Information-Service/)
- <https://www.warwickshire.gov.uk/children-families>

01926 742 274.

The Family Intervention Service can help you with topics such as:

- family relationships
- finance
- housing
- parenting support
- special educational needs and disabilities (SEND)
- childcare
- health and wellbeing

Please don't hesitate to get in touch. They are there to help!

**Mrs Pountney**

**Assistant Principal**



## **Free Sanitary Items**

Students can collect free sanitary wear at school. They are available from Reception, Student Services and the PE changing rooms. Tampons and sanitary towels are available.

**Mrs Pountney**

**Assistant Principal**

## **Food Bank**

If you are struggling financially and would like a food parcel or food bank voucher, please contact Mrs Pountney or Mrs Lavery as we have a few food parcels left and we are happy to deliver.

