



TL Proud to be part of the
Transforming Lives Educational Trust

ASHLAWN SCHOOL

Newsletter Issue Date:
Friday 21 January 2022

Principal:
Mrs S Evans

Tel: 01788 573425

Email: info@ashlawn.org.uk

Website: www.ashlawn.org.uk

Message from the Principal

We are pleased to launch the *Big Ashlawn Parent Survey today*. A link to the letter and survey can be found [HERE](#) and we would really appreciate you taking the time to give your feedback. Parents and carers often give us feedback and we appreciate the wonderful emails, messages and constructive critique more than you will ever know, but a more formal survey will also inform our practice as we continuously strive to be the best possible school.

We are consulting on three areas at the current time:

- Uniform
- Relationships, Sex and Health Education
- Quality of Provision

We hope that by putting these three areas into one survey it will make it easier for you to respond.

Please note that the uniform survey is not intended to necessarily introduce a new or different uniform, it is an opportunity for you to express your views so that we can continue to review the functionality of our uniform and ensure that we provide best value.

We have also included an opportunity to express an interest in volunteering to support the school. Our army of volunteers that helped with our testing centre showed how effectively a community can support a school and we welcome offers of support. Ashlawn is a school at the centre of an amazing community and it takes all of us to create the school we want for the young people we serve.

Your views count - please take part!

Siobhan Evans

College Achievement Points

Congratulations to the top scoring pupils from each college this week!

	Webb Ellis	Evans	Brooke	Ruddock	Livermore
Year 7	Henry B	Alexander O	Kexin W	Chinedum O	Nelly G
Year 8	Ava A	Manav L	Ianis S	Emily A Lila B Edward G	Maryn Y
Year 9	Imogen E	Holly L	Jannah N	Angela C	Donovan O
Year 10	Calvin R	Joshua B	Jack W	Joseph H	Danesh C
Year 11	Benjamin H	Thomas C	Kezia H	Gabriella R	Juliette V
Year 12	Max W	Sam D Emma P Amber P	Jack L	Dylan H	Ruby L Charlie N
Year 13	Elizabeth McC	Imogen C Mia G	Joshua H Maria P	Joshua W	Ruby H Jessica L



3266!



3195



3060



2910



2906



TL Proud to be part of the
Transforming Lives Educational Trust

ASHLAWN SCHOOL

Newsletter Issue Date:
Friday 21 January 2022

Principal:
Mrs S Evans

Tel: 01788 573425

Email: info@ashlawn.org.uk

Website: www.ashlawn.org.uk

SILLY CHALLENGE OF THE WEEK

BEST PLACE TO TAKE A NAP

UPLOAD ENTRIES TO THE ASSIGNMENT ON
YOUR COLLEGE GOOGLE CLASSROOM

2 ACHIEVEMENT POINTS PER
ENTRY. WINNERS WILL
RECEIVE 5 ACHIEVEMENT
POINTS



Competition Spotlight

Here is one of the many college competitions for this spring term. You will find
all the details on your college google classrooms.

Geography College Competition

Create an advert/poster for a famous global landmark aimed at tourists. Include pictures and facts about the
location as well as prices to visit.





TL Proud to be part of the
Transforming Lives Educational Trust

ASHLAWN SCHOOL

Newsletter Issue Date:
Friday 21 January 2022

Principal:
Mrs S Evans

Tel: 01788 573425

Email: info@ashlawn.org.uk

Website: www.ashlawn.org.uk



Food & Nutrition News

Year 10 Food & Nutrition students this week have been focusing on their presentation and decorative techniques. They all worked incredibly hard to produce some fantastic cheesecakes!



Food Menu w/c 24.01.22

Monday	Tuesday	Wednesday	Thursday	Friday
HMD: Meatballs and Spaghetti with Garlic Bread	HMD: Hunters Chicken with Rice	HMD: Chicken Curry and Rice with mini Naan	HMD: Sweet and Sour Chicken Balls with Rice	HMD: Fish, Chips and Mushy Peas
HMD: Vegetarian Meatballs Spaghetti and Garlic Bread	HMD: BBQ Quorn with Rice	HMD: Quorn Curry and Rice	HMD: Sweet and Sour Quorn with Rice	HMD: Cheese and Onion Pasty with Chips
Jacket Potato and Tuna	Hot Pasta King Meat	Jacket Potato and Cheese	Hot Pasta King Meat	Jacket Potato and Beans
Hot Chicken Fillets	Hot Pasta King Vegetable	Hot Cheese and Tomato Bagel	Hot Pasta King Vegetable	Hotdog Rollover
CMD: Chicken and Stuffing Sandwich	Hot Sausage Roll	CMD: Chicken and Bacon with Mayo	Hot Chicken Burger	CMD: Hot and Spicy Chicken Mayo
CMD: Ploughman's	CMD: Ham Salad	CMD: Egg and Cress Sandwich	CMD: BLT Sandwich	CMD: Cheese and Pickle Sandwich
	CMD: Tuna and Cucumber Sandwich		CMD: Cheese Salad Sandwich	



TL Proud to be part of the
Transforming Lives Educational Trust

ASHLAWN SCHOOL

Newsletter Issue Date:
Friday 21 January 2022

Principal:
Mrs S Evans

Tel: 01788 573425

Email: info@ashlawn.org.uk

Website: www.ashlawn.org.uk



Take your time to read through Warwickshire County Council's January 2022 edition of Warwickshire SEND. This newsletter brings you news and information on special educational needs and disability in Warwickshire. Please click the link [here](#) to access.

School Production



Tickets available on ParentPay

Expressive Arts Box Office

£6 Concessions, £8 adults

Ashlawn School East Hall

February 9, 10 & 11 2022 @ 7 pm

Knife Crime Awareness

Following 'Operation Sceptre' which happened in school last week, we will be delivering a series of activities during form times to support the message that Knife crime kills! Students will watch a video and have the opportunity to discuss the impact of knife crime on the whole family and community. Parents, Grandparents and extended Family Members we need your help...you can also play a vital role in stopping 'Knife Crime' becoming a part of your young people's lives too. Knowing the Law and talking to your child about the dangers can help keep them safe. Keep a look out! Sometimes there might be obvious reasons for you to think your child may be carrying a knife...such as a knife going missing from the kitchen! Even if you live in a small village 'fear of crime' can still affect young people...it is paramount that as they grow and mature into young adults they understand how to 'stay safe' when they travel to large towns, cities or even abroad. When on social nights out with friends...alcohol intake and other factors can cause a perfectly enjoyable evening to spill into violence and anti-social situations.

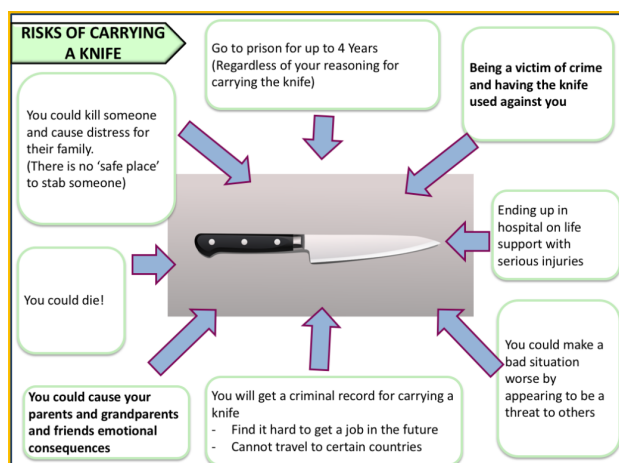
Many parents are very concerned about their children's 'safety' when they socialise and meet new friends. Media attention has raised the awareness to the issues surrounding 'Knives', but it is up to us to do something about the mind-set and future understanding about 'keeping safe'...to arm our young people correctly, with the right information to help them make the right choices!

We encourage all parents and carers to talk to your child about knife crime and the devastating effects it can have on everyone connected with them.

Talk to your Child about Knives! - [Download Information Leaflet](#)

SOME USEFUL ADVICE TO DISCUSS, when speaking to you child about Safety:

- 1) Being confronted by somebody armed with a knife...WALK AWAY, and ensure there's plenty of distance!
- 2) NEVER...think that you can talk to the person carrying a weapon to persuade them not to use it!
- 3) NEVER...believe you can reason or negotiate...walk away and report it to someone!
- 4) ALWAYS...report someone you 'know' or 'suspect' is carrying a knife! It could save a life...tell a trusted adult, parent, teacher or anonymously to Crimestoppers.
- 5) IT IS ILLEGAL to carry a 'knife'...so the advice is NEVER be tempted to carry one even if you think you need it!
- 6) If your child is being bullied or feeling threatened by someone they think is carrying a knife...NEVER be tempted to carry even in the belief it will protect them...most children who carry knives, say it because they are scared. This is NOT a good option! Try to avoid situations and/or people that scare or bully...and REPORT IT!





TL Proud to be part of the
Transforming Lives Educational Trust

ASHLAWN SCHOOL

Newsletter Issue Date:
Friday 21 January 2022

Principal:
Mrs S Evans

Tel: 01788 573425

Email: info@ashlawn.org.uk

Website: www.ashlawn.org.uk

Covid Safety Measures Update

After the recent updated guidance on COVID protocols in schools, please find below the current guidance.



Students should:

- Wear masks (unless medically exempt) **in indoor communal areas** such as in the corridors and halls. Students and staff may wear masks in classrooms if they wish
- Wash hands on entering school
- Sanitise hands where possible
- Move sensibly around the site, giving others space and being patient if it is a busy area to ensure that there is no crowding.

Students are expected to Lateral Flow test on Sunday and Wednesday evenings. Please report your result to the government website <https://test-for-coronavirus.service.gov.uk/report-result/login-choice>

We will continue to monitor case levels. Please note that the current guidance allows for schools to put their own mitigation measures in place if cases increase.

Flu Vaccinations

If your child missed their flu vaccination this week, please note that we will not be doing a catch up. Any parents/carers who do not submit their child's consent before the portal closed can attend a local clinic venue for the flu vaccination via the Swiftqueue link [here](#).



Covid Vaccinations

Nurses will be in school on the 7 & 8 March for coronavirus vaccinations. If you wish to vaccinate your child before hand, please click the link [here](#) and see the information leaflet below.

COVID-19 Vaccination Alert

Get your COVID-19 vaccinations at Locke House, Rugby

16-17 year olds now eligible for boosters

16 and 17 year olds

2nd dose can be taken 12 weeks after 1st dose

Booster can be taken 91 days after 2nd dose

18 years and upwards

2nd dose can be taken 8 weeks after 1st dose

Booster can be taken 91 days after the 2nd dose

Open for booked appointments and walk-ins for 16 years and upwards only
1st dose, 2nd dose, 3rd dose or the Booster dose

(eligibility criteria applies. Please note that 12-15 year olds cannot be vaccinated at Locke House)

Opening Hours

Weekdays: 8am to 11:50am

Weekdays: 4pm to 7:50pm

Saturday: 8am to 4:50pm

Sunday: 8am to 1:50pm

Locke House

The Railings, Woodside Park
Rugby – CV21 2AW





TL Proud to be part of the
Transforming Lives Educational Trust

ASHLAWN SCHOOL

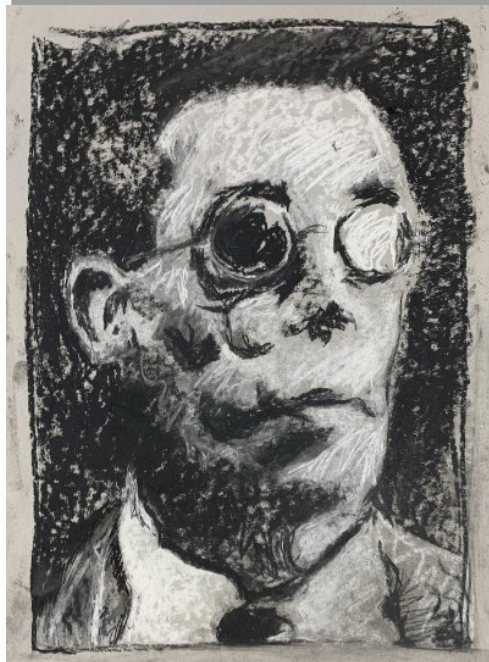
Newsletter Issue Date:
Friday 21 January 2022

Principal:
Mrs S Evans

Tel: 01788 573425

Email: info@ashlawn.org.uk

Website: www.ashlawn.org.uk



By Charlie Year 13

Art of the week

By Bonnie Year 10

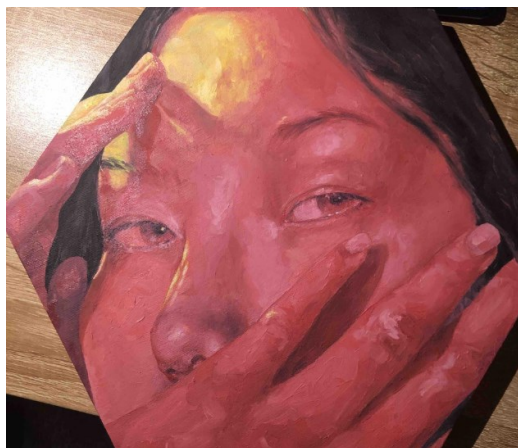


By Robyn Year 10



By Rosie Year 8

By India Year 10



*By Alice
Year 13*



*By Martha
Year 10*



TL Proud to be part of the
Transforming Lives Educational Trust

ASHLAWN SCHOOL

Newsletter Issue Date:
Friday 21 January 2022

Principal:
Mrs S Evans

Tel: 01788 573425

Email: info@ashlawn.org.uk

Website: www.ashlawn.org.uk

Dates for Your Diary

Term dates for this year can be found on the link below.

Used Uniform Sale **29 January**

Half Term **Monday 21 February – Friday 25 February**

Covid Vaccinations **March 7 & 8**



[Term Dates](#)

Uniform Sale

Our next used uniform sale is taking place on Saturday 29 January from 10 am until 11.30 am in the school canteen area. Please remember that our sales are only as good as the variety of donations we receive. We look forward to seeing you there.

WARWICKSHIRE AND FAMILIES FRONT DOOR

If you have concerns that a child is suffering any form of abuse, neglect or cruelty contact the **Warwickshire Children and Families Front Door (Front Door)** immediately by calling **01926 414144**. Lines are open Monday to Thursday 8.30am - 5.30pm, Friday 8.30am - 5.00pm.

If you need to get in touch out of usual office hours, please contact the **Emergency Duty Team** immediately by calling **01926 886922**.

POLICE

If you think that a child is at immediate risk, contact the **police immediately by calling 999**.

Call 101 for non-emergencies.

CHILDLINE

Childline is a free, private and confidential service where you can talk about anything. Trained counsellors are there to support anyone under 19 with any issue. **Call 0800 1111**



SAMARITANS

If you're having a difficult time and want to talk to someone confidentially, call the Samaritans on **116 123** (24 hours a day) or If you would prefer to text, you can **text Shout** to **85258** if you're experiencing a personal crisis, are unable to cope and need support.



RUGBY FOOD BANK

This service provides emergency food for families and individuals in crisis. There are various pickups but the closest for Rugby is next to the Benn Hall.

Please email www.rugby.foodbank.org.uk or phone 07557680019



FINANCIAL HARDSHIP

If you are in financial crisis please call the free national helpline - Help through Hardship, on **0808 2082138** (open Monday to Friday, 9am-5pm, closed on public holidays) to talk confidentially with a trained Citizens Advice adviser. This phone call is free. They can help address your crises and provide support to maximise your income, help you navigate the benefits system, and identify any additional grants you could be entitled to. If needed, they'll issue you with a voucher so you can get an emergency food parcel from your local food bank.



TL Proud to be part of the
Transforming Lives Educational Trust

ASHLAWN SCHOOL

Newsletter Issue Date:
Friday 21 January 2022

Principal:
Mrs S Evans

Tel: 01788 573425

Email: info@ashlawn.org.uk

Website: www.ashlawn.org.uk

Safeguarding Advice

What to do if you are worried about your, or someone else's safety.

Tell a trusted adult at school.

We are here to help, and our team of Designated Safeguarding Leads will provide support.

You can also call on the following number: 01788 573425.

If you are in immediate danger then phone 101 or 999.

Here are some other ways things you can get the help you need:

- Tell a trustworthy family member or safe adult who may be able to help you
- Call Childline on 0800 1111 and talk through how you are feeling and your concerns
- Email the Designated Safeguarding Leads at school at safeguarding@ashlawn.org.uk
- Speak to Young Carers if you are looking after someone at home. Tel: 02476 217740
- Look online for support from the Family Information Service at www.warwickshire.gov.uk/childrenandfamilies
- If you feel unsafe or in danger call the council helpline on 01926 414144

If you are struggling with your mental health and want some reassurance and advice, then contact your form tutor or Head of Year. They would love to hear from you and they will help alleviate your worries.

Mrs Pountney

Assistant Principal and Designated Safeguarding Lead

**Safeguarding is
Everyone's
Responsibility**

The Family Information Service can provide a wide range of information/support/ referrals for families in Warwickshire either via our helpline or on a face to face basis.

FIS Brokerage Service is a 1:1 early intervention service which can be used to support families with children age 0 to 25 living in Warwickshire to access services where there are barriers and/or complex needs.

To access this service please contact them using the methods below:

fis@warwickshire.gov.uk

- [Twitter – @WarksFIS](https://twitter.com/WarksFIS)
- [Facebook – Warwickshire Family Information Service](https://www.facebook.com/Warwickshire-Family-Information-Service/)
- <https://www.warwickshire.gov.uk/children-families>

01926 742 274.

The Family Intervention Service can help you with topics such as:

- family relationships
- finance
- housing
- parenting support
- special educational needs and disabilities (SEND)
- childcare
- health and wellbeing

Please don't hesitate to get in touch. They are there to help!

Mrs Pountney

Assistant Principal



Free Sanitary Items

Students can collect free sanitary wear at school. They are available from Reception, Student Services and the PE changing rooms. Tampons and sanitary towels are available.

Mrs Pountney

Assistant Principal

Food Bank

If you are struggling financially and would like a food parcel or food bank voucher, please contact Mrs Pountney or Mrs Lavery as we have a few food parcels left and we are happy to deliver.

