



TL Proud to be part of the
Transforming Lives Educational Trust

ASHLAWN SCHOOL

Newsletter Issue Date:
Friday 10 September 2021

Principal:
Mrs S Evans

Tel: 01788 573425

Email: info@ashlawn.org.uk

Website: www.ashlawn.org.uk

Message from the Principal

Welcome to the start of the 21/22 school year! It has been fantastic to see our students return to school. The start of term has been busy with student induction. Our pastoral teams have carefully designed a programme to ensure that all of our students are settled at the start of term, have a chance to get to know their tutor groups and tutors, develop wellbeing strategies and are fully aware of our high expectations for their conduct.

Our expectations are not new. They are in place to ensure that all students and staff have an environment where they can flourish. They are in place to ensure that learning and teaching can take place without interruption. They are in place to help our students to understand that all organisations have expectations. Our expectations are in place for the whole school. With such a large community, we will never please everyone all of the time, but it is important to us to stick to our core purpose. Our purpose is to provide an excellent education for your children – both within and outside of the classroom. Our expectations form the basis of our culture, which enables us to do just that.

Our high expectations show that we care about your child because we will accept nothing but their best. We care about your child so we will follow up when they are not quite meeting those high expectations. We hope that you chose Ashlawn for your child because you share in the same aspiration that we have – for your child to fulfil their potential and grow into well-educated adults with the skills and qualities that will enable them to take their place as a contributing and successful member of the community. We look forward to working in partnership with you to ensure that all of our students – your children – meet their potential in all areas.

Siobhan Evans

Menu for week commencing 13 September 2021

Monday	Tuesday	Wednesday	Thursday	Friday
HMD: Hot Flavoured Chicken Wrap and Salad	HMD: Spaghetti Carbonara with Garlic Bread and Sweetcorn	HMD: Chicken Curry and Rice with Mini Naan	HMD: Sweet and Sour Chicken Balls with Rice	HMD: Fish, Chips and Mushy Peas
HMD: Hot Flavoured Quorn Wrap and Salad	HMD: Filled Pasta with Cheese Sauce and Garlic Bread	HMD: Quorn Curry and Rice with Mini Naan	HMD: Sweet and Sour Quorn with Rice	HMD: Cheese and Onion Pasty with Chips
Jacket Potato and Tuna	Hot Pasta King Meat	Jacket Potato and Cheese	Hot Pasta King Meat	Jacket Potato and Beans
Hot Chicken Fillets	Hot Pasta King Vegetable	Hot Cheese and Tomato Bagel	Hot Pasta King Vegetable	Hot Rollover Hotdog
CMD: Chicken and Stuffing	Hot Sausage Roll	CMD: Hot Chicken Bacon and Mayo	CMD: BLT	CMD: Hot and Spicy Chicken with Mango
CMD: Ploughmans	CMD: Ham Salad	CMD: Egg and Cress	CMD: Cheese Salad	CMD: Cheese and Pickle
	CMD: Tuna and Cucumber			

Important Visitor Information

All visitors **must** report to Main Reception via the pedestrian gate so that they can sign in.

Please **DO NOT** enter the school via other open gates as this will activate an intruder alert.

Thank you for your cooperation.



ASHLAWN SCHOOL

TL Proud to be part of the
Transforming Lives Educational Trust

Newsletter Issue Date:
Friday 10 September 2021

Principal:
Mrs S Evans

Tel: 01788 573425

Email: info@ashlawn.org.uk

Website: www.ashlawn.org.uk

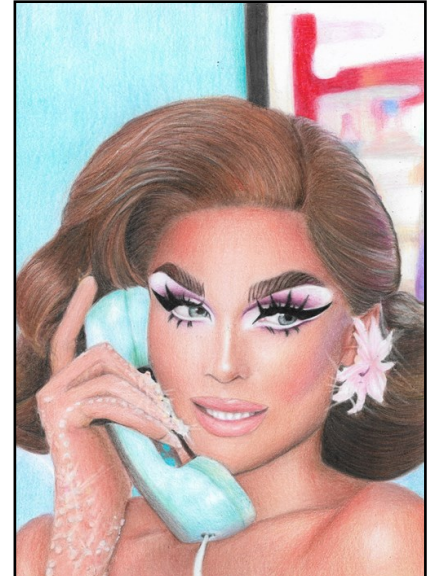
Art of the Week



By Izzy Year 11



By Amber Year 13



By Blythe Year 10

Ceramic plates made during the artists in residence in June



By Megan Year 10



By Jake Year 10



T Proud to be part of the
Transforming Lives Educational Trust

ASHLAWN SCHOOL

Newsletter Issue Date:
Friday 10 September 2021

Principal:
Mrs S Evans

Tel: 01788 573425

Email: info@ashlawn.org.uk

Website: www.ashlawn.org.uk

In Memoriam

It is with great sadness that I share with you the news that two well-respected and loved colleagues, Angela Youds and Vicki Wood, passed away during the summer break. We are all shocked at their untimely passing. Both of these sadly-departed and wonderful women were deeply committed to the education of the young people in our community. They wanted to support our students to progress and have fulfilling lives. Their legacy is that because of them, many will go on to do just that. We thank them for the service that they have given our community and we send our thoughts and best wishes to those affected by this loss.

This week, support has been available in Learning Development for anyone affected by their loss. Should any students wish to talk about this news in the coming days or weeks, they can of course talk to any member of staff, or the pastoral team, who will be able to offer support.

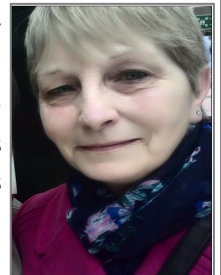
Angela Youds

Angela Youds passed recently after a short illness. Angela was a long-standing member of our Learning Development Department. Having previously worked as our Literacy and Numeracy coordinator, the impact of her work is everywhere across the school. Angela worked with many of our most vulnerable students over the years and they benefited from her knowledge, skill and passion for all of them to develop reading skills. Staff and parents always commented about how good and how patient she was with her students. Angela also supported the families of her students - especially during lockdown and this was made apparent by the huge number of emails, telephone calls and messages to thank her for the positive impact that she had had on the whole family during such a challenging time. Everyone at Ashlawn will miss her very much.



Vicki Woods

Vicki Woods recently passed after a short illness. Vicki was an invigilator for us for 16 years, forming part of the original team of external invigilators at Ashlawn. She loved working at Ashlawn and has supported the exam team and thousands of students over the years during exam periods, for internal and public exams and for assessments like the Modern Foreign Languages aptitude test where her calm and nurturing approach calmed many a nervous student. Schools rely on fantastic teams like our invigilators - who step up when needed - to run successfully and we thank her for her service and good humour, as well as her calm and professional competence in her role. All at Ashlawn will miss her very much.



Giving us Feedback

We appreciate it when parents and carers give us constructive feedback. We are a school that aims for continuous improvement and we are happy to listen and try our best to resolve any concerns. We believe that we have a high level of success with resolving concerns when we are able to have a constructive dialogue with parents and carers.

We will be sending out questionnaires to parents and carers this year but we welcome less formal feedback too. If you have a concern, please do contact your child's tutor in the first instance as most matters are easily resolved – even when they seem insurmountable to a young person. Your child's Head of Year and Key Stage Leader will also be able to provide support for a range of issues.

If you have a complaint that we have not been able to resolve, please do use the complaints policy as an avenue for making a complaint. The link to the policy is <https://ashlawn.org.uk/app/uploads/2019/11/TLET-Complaints-Academy-Policy-Oct-2019.pdf>. Of course, like everyone we enjoy positive feedback too when things are going well and we would be happy to receive positive messages too.



TL Proud to be part of the
Transforming Lives Educational Trust

ASHLAWN SCHOOL

Newsletter Issue Date:
Friday 10 September 2021

Principal:
Mrs S Evans

Tel: 01788 573425

Email: info@ashlawn.org.uk

Website: www.ashlawn.org.uk

COVID 19 – mitigating risk at school

While we all had hoped for a return to normality this term, the shadow of Covid-19 still affects decisions about all aspects of school life. There is much in the news about the current risks presented by Covid in school settings. To ensure that our community remains as safe as possible, we will continue with many of the systems of control that were in place last term. This letter details the adaptations that we will have in place on site until further notice.

Bubbles and social distancing	<p>While official guidance has taken away the need to operate using bubbles and social distancing, at Ashlawn, students will still be required to use external routes around the building to avoid close contact in busy corridors. Teaching staff will meet them at set points and escort them into the building.</p> <p>Students will continue to eat lunch separately within their year groups but will not be limited to year group areas outside.</p> <p>Assemblies will be delivered through live remote access within their tutor groups until further notice.</p> <p>Students will enter through their year group entrance from 8.30 am.</p>
Face coverings	<p>At Ashlawn, students and staff are encouraged to wear face coverings on site if they are unable to distance from others.</p> <p>Students travelling to school on buses must continue to wear masks and sit in the same seat where possible.</p> <p>The wearing of face coverings may be implemented for all staff and students if numbers rise quickly, suggesting that transmission is taking place within our setting.</p>
Contact Tracing	<p>Ashlawn will continue to work with both Track and Trace and Public Health. Close contacts will be advised to have a PCR test by Track and Trace.</p>
Ventilation	<p>The DFE has advised that schools will receive a set number of CO₂ Monitors to enable rooms to be checked for adequate ventilation. Some schools (special schools will be first) will start to receive CO₂ monitors from 16 September. The DFE will release guidance at this point. We believe that we will probably receive them towards the end of the Autumn Term.</p> <p>At Ashlawn, we will continue to ventilate classrooms with open windows and ensure that students use external routes around school to mitigate risk.</p>
Cleaning	<p>At Ashlawn we will continue to invest in additional cleaning hours to ensure that high touch surfaces are cleaning more regularly. Sanitiser and disinfectant will continue to be used in classrooms and around site.</p>
Meetings	<p>Following from the success of online Parent Information evenings, we will move permanently to online meetings. In-person meetings are still available when necessary.</p>
Regular testing	<p>Students have been invited to attend school for tests. This testing is underway.</p> <p>Students will receive packs of LFD tests to continue at-home testing. We encourage all students and staff to continue testing regularly.</p>
COVID-19 Vaccination	<p>The government continues to encourage all eligible people to get vaccinated. 88% of all adults have had at least one dose. 77% of all adults have had two doses.</p> <p>All adults are eligible for two doses.</p> <p>Young people aged 16 – 17 are eligible to receive their first dose.</p> <p>Young people aged 12 – 15 who have an underlying health condition or live with someone who is immunosuppressed are eligible for two doses.</p> <p>To date, schools have received NO information from the DFE about any school-based vaccination programmes for students aged 12-15. There is much speculation in the press. Should anything change, we will of course keep parents fully informed.</p>



TL Proud to be part of the
Transforming Lives Educational Trust

ASHLAWN SCHOOL

Newsletter Issue Date:
Friday 10 September 2021

Principal:
Mrs S Evans

Tel: 01788 573425

Email: info@ashlawn.org.uk

Website: www.ashlawn.org.uk

We remind all Ashlawn families that students should not attend school if they have any symptoms of illness. While the three main symptoms continue to be a high temperature, a new persistent cough and loss of taste and/or smell, we know that many students report the first symptoms as being a sore throat and headache.

As we start a third academic year affected by this pandemic, I know that with the support of our incredible community we will continue to provide an excellent education for our students, whatever the future brings.

Siobhan Evans

Principal

English books for this term

Just a reminder that all texts, from years 7 to 13, are available from Hunt's bookstore in Rugby with 20% discount through the following link, or instore. Just mention Ashlawn when you go in:

<https://huntsbookshop.com/>



The books we will be studying this term are:

- **Year 7** - The Book Thief by Markus Zusak and Wonder by R.J. Palacio
- **Year 8** - Journey's End by R.C. Sherriff and Once by Morris Gleitzman
- **Year 9** - see teacher for their choice of Dystopian novel
- **Year 10** - An Inspector Calls by J.B. Priestley
- **Year 11** - Macbeth by William Shakespeare
-

All study guides for the KS4 texts are also available to buy from Hunts Bookstore

We strongly recommend that all students, if possible, have their own copies of the texts they are studying, in order to be able to make revision notes in the book and use for home study however, we will have class sets in school if this is not possible.

Sami Bryant

Head of English



Food Bank

If you are struggling financially and would like a food parcel or food bank voucher, please contact Mrs Pountney as we have a few food parcels left and we are happy to deliver.



Free Sanitary Items

Students can collect free sanitary wear at school. They are available from reception and the PE changing rooms. Tampons and sanitary towels are available.

Mrs Pountney
Assistant Principal





TL Proud to be part of the
Transforming Lives Educational Trust

ASHLAWN SCHOOL

Newsletter Issue Date:
Friday 10 September 2021

Principal:
Mrs S Evans

Tel: 01788 573425

Email: info@ashlawn.org.uk

Website: www.ashlawn.org.uk

Safeguarding Advice

What to do if you are worried about your, or someone else's safety.

Tell a trusted adult at school.

We are here to help, and our team of Designated Safeguarding Leads will provide support. You can also call on the following number: 01788 573425.

If you are in immediate danger then phone 101 or 999.

Here are some other ways things you can get the help you need:

- Tell a trustworthy family member or safe adult who may be able to help you
- Call Childline on 0800 1111 and talk through how you are feeling and your concerns
- Email the Designated Safeguarding Leads at school at safeguarding@ashlawn.org.uk
- Speak to Young Carers if you are looking after someone at home. Tel: 02476 217740
- Look online for support from the Family Information Service at www.warwickshire.gov.uk/childrenandfamilies
- If you feel unsafe or in danger call the council helpline on 01926 414144

If you are struggling with your mental health and want some reassurance and advice, then contact your form tutor or Head of Year. They would love to hear from you and they will help alleviate your worries.

Mrs Pountney

Assistant Principal

**Safeguarding is
Everyone's
Responsibility**

The Family Information Service can provide a wide range of information/support/ referrals for families in Warwickshire either via our helpline or on a face to face basis.

FIS Brokerage Service is a 1:1 early intervention service which can be used to support families with children age 0 to 25 living in Warwickshire to access services where there are barriers and/or complex needs.

To access this service please contact them using the methods below:

fis@warwickshire.gov.uk

- [Twitter – @WarksFIS](https://twitter.com/WarksFIS)
- [Facebook – Warwickshire Family Information Service](https://www.facebook.com/WarwickshireFamilyInformationService)
- <https://www.warwickshire.gov.uk/children-families>

01926 742 274.

The Family Intervention Service can help you with topics such as:

- family relationships
- finance
- housing
- parenting support
- special educational needs and disabilities (SEND)
- childcare
- health and wellbeing

Please don't hesitate to get in touch. They are there to help!.

Mrs Pountney

Assistant Principal

