

ASHLAWN

WINTER NEWS 2023



ASHLAWN
SCHOOL

Our best, always



Welcome from the Principal

Happy Christmas everyone.

As always, I am immensely proud to lead Ashlawn School and to be part of its journey.

This has possibly been one of the busiest terms I can remember. The level of scrutiny of Ashlawn School has been both exciting and confirming. We couldn't have been more pleased with the monitoring visit from Ofsted that evidenced our journey since the inspection over a year ago, or of the other ways in which we have sought to measure our progress.

We have seen visits from a team of school leaders who saw our staff and students hard at work, a day with our school improvement partner, an external safeguarding inspection, a visit from our MP Mr Mark Pawsey and a visit of the team from the office of the Regional Director. All of these external reviews and visits shared the same impression, that we are committed to providing an inspirational environment where students are engaged and enthused. There has been a recognition of us knowing our school and working hard together to bring about our shared vision for Ashlawn and our commitment to creating a school of which we can all be proud to be a part of.

And, while being assessed for our progress we have also seen so many incredible opportunities for students to engage with. We have raised significant amounts for charities to support

those less fortunate than ourselves. We are a school that celebrates the steps that students are taking to improve both academically and socially, providing opportunities both in and out of the classroom where students can thrive. This newsletter celebrates those opportunities and shows what an amazing place our school is.

As the early darkness draws in, we look to the start of the new year and a new beginning. We reflect on how to better ourselves, to help others and to become a stronger community. As a school we see each day as a new opportunity to be our best. It is this passion for the education of our students that brings us to work every day.

I look forward to coming back in the new year refreshed and ready for the challenges and opportunities that 2024 will bring. I wish you all a very merry Christmas and a prosperous New Year.

Paul Brockwell
Principal, Ashlawn School



“DECISIVE ACTION” PRAISED AT ASHLAWN SCHOOL

Ashlawn School welcomed the outcome of a recent Ofsted visit – where inspectors praised leaders for taking “decisive action to help move the school forward”

The monitoring visit, which is the first time Inspectors have visited Ashlawn since the school was regraded from Outstanding a year ago, looked at every aspect of life at the school during a rigorous inspection process. At the conclusion, inspectors found that the school had “wasted no time in addressing the areas that needed to improve” so that “everyone feels valued and part of Ashlawn’s future”.

Paul Brockwell, Principal, said: “A huge amount has been achieved over the last 12 months to ensure that Ashlawn is a place where every young person can thrive, and we are extremely pleased to see Ofsted recognise all the hard work being undertaken by students, staff and our wider community.

“We have reviewed and enhanced every area of school life, and the impact of that is tangible. Ofsted noted real improvements in our curriculum, culture and the support provided for young people with additional needs. In fact, inspectors were on the cusp of taking the relatively unusual step of turning this monitoring visit into a full graded inspection in recognition of how far we have come.

“When inspectors return over the next 12 months, we will be even further ahead in our improvement journey. I am really excited about what we will be able to further achieve during this time.”

The monitoring report praises the Trust and school leaders for making swift changes, and noted that “together as a school community, you have set about creating a new clear and coherent vision for the school.”

Changes to improve behaviour and attitudes at school were highlighted, with the report outlining how “sensible changes to the school day”, along with consultation on a new behaviour policy with the wider school community had driven improvements in behaviour and attitudes.

Improvements to SEND provision at the school were also noted, including a restructured inclusion facility, a new system of information sharing and strategies for effectively adapting learning opportunities for SEND pupils, along with plans for further improvement with the “introduction of new learning plans to monitor the impact of any interventions that are put in place”. Improved delivery of the school curriculum resulting from leadership coaching and cross-departmental learning groups were commended, as was a new literacy strategy and development of a whole school reading culture.

The school’s inspectorate also praised the “strong strategic oversight of the school’s work” undertaken by Governors and trust leaders, and how “they are using the trust’s capacity effectively to help provide support and challenge to school leaders.”

TLET CEO, James Higham, said: “It is fantastic to see all elements of the Ashlawn community work coming together with such pace and purpose to make the required changes and improvements.

“It is a real team effort, but what is most impressive is the sense that the work is not yet complete. While huge strides have been made, we need to further embed all the good practice that was evident to the inspection team. We will continue to work in partnership with school leaders to keep up these measures, ensuring that every student has the opportunity to flourish.”

Under the current Ofsted framework, the inspection team should now return within a year to undertake a full graded inspection.



ASHLAWN SCHOOL WINTER SHOWCASE

The Art Faculty's Winter Showcase was held on Thursday 14th December and proved to be an overwhelming success and a lovely way to celebrate this special month!

It is always so impressive how our students come together to create such magical experiences.

The student-led event showcased the talent of our shining stars, from Years 7 through 13, not just in performing roles but also in tech, front of house, backstage and during the preparation of the event.

The KS3 Drama Club's mini production of *The Grinch* really puts us all in a festive mood, along with music and dance performances from across the key stages and even a sneaky peek at our upcoming production of *We Will Rock You!*

Thank you, as always, to the staff who give their time to ensure the Arts Faculty events are successful.



SAFEGUARDING

Help over Christmas

Christmas can be an emotional time for many families and the cost-of-living crisis can exacerbate the situation further.

If you need support during the festive period, then please remember that there is help out there. Here are some of the agencies that can support you.



HELP and SUPPORT

SAMARITANS

The Samaritans:
Tel: 116 123

ChildLine
0800 1111

Child Line:
Tel: 0800 1111

Refuge
For women and children.
Against domestic violence.

Refuge (Domestic Violence):
Tel: 0800 4081552, call 999 if you are in immediate danger

Helps with drugs or alcohol for young people up to the age of 25
compass.warksYPSDuty@nhs.net or 01788 578227

VS VICTIM SUPPORT

Victim Support:
Tel: 01926 358060

Beat
Eating disorders

BEAT Eating Disorders:
Tel: 0808 8010677

Cruse Bereavement Support

CRUSE Bereavement Support:
Tel: 0808 8081677

Rugby foodbank

Rugby Food Bank:
Tel: 07557 680019

SOCIAL MEDIA SAFETY

If you have bought your child a device this Christmas, please remember the age limits of social media platforms. These are:



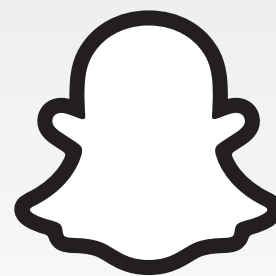
Facebook:
13 years old



Instagram:
13 years old



Whatsapp:
16 years old



Snapchat:
13 years old



TikTok:
13 years old

As a school, we teach all our students how to navigate the internet safely and with caution.

Please remember that you also have a part to play in checking what your child can access and monitoring their use.

We want all our students to engage positively with the online world and stay safe.

For more advice about internet safety, visit [NSPCC Internet Safety Advice](https://www.nspcc.org.uk/keeping-children-safe/online-safety/).

We wish all our families a wonderful Christmas but if you need to inform us of anything that has happened over the Christmas period, please send us an email so we can support your child once they return to school.

SCAREFEST 2023

The inaugural Ashlawn Scarefest was absolutely spook-tacular!

Organised by Mr. Dempsey and the Art Department, students and visitors experienced thrills and chills and were blown away by the spine-tingling attractions, intricate decorations and dedicated efforts of the student actors within.

Many expressed their admiration for the immersive experience and the attention to detail that made the event so memorable, helping to raise funds for the department and ensure events and shows can continue at this incredible level.

A huge congratulations to everyone involved with this amazing event!



FUNDRAISING AT ASHLAWN

Throughout the year we have held numerous non uniform days, sponsored events, cake sales and more to raise as much money as we can for our three chosen charities - Children in Need, Comic Relief and our local charity, Myton Hospice.

Our staff and students have gone above and beyond to make as much money as possible and we are proud to say we have raised £5775 for these amazing charities.

Well done to all the staff and students in supporting these events!

NEW ASHLAWN AMBASSADORS PROGRAMME

Over the past few weeks of the autumn term, we have launched our new Ambassador programme for our students.

Ashlawn has recently launched its new Ambassadors programme, students selected by their Head of Year to represent their year group and work on school-wide initiatives to make our school a better place for all.

They are working together in teams representing the Ashlawn CARE values and the community team has already got ideas for a World Culture Week in April to celebrate diversity across the school.

Students have been given an ambassador badge, which they wear with pride.

Our Ashlawn Ambassadors meet every Friday lunchtime in the Sixth Form study hub for idea generation and lively discussion, led by the Year 12 students. We can't wait to see what they come up with!

CALLING IT OUT!

Students in Year 10 participated in a workshop on sexual harassment and sexual violence.

They watched a production about two school friends who experienced peer pressure to get involved in sexual harassment and how lives changed because of their experience.

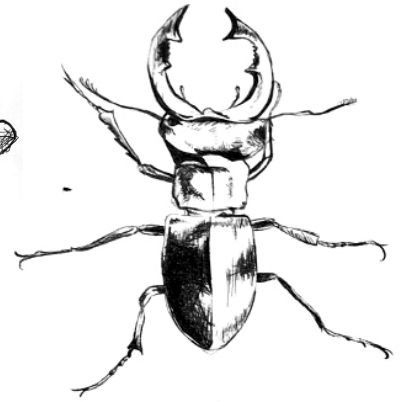
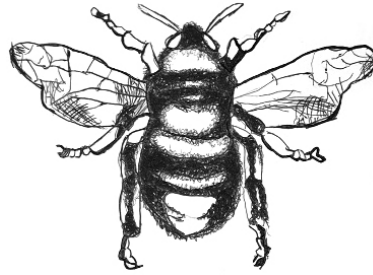
After the production, every student had a 30-minute focus group discussion with the actors about the topic and how they can play a vital role in stopping sexual violence and harassment.

The students in Year 10 were excellent throughout the day. They took a mature, thoughtful approach to the discussion and all said that it helped them reconsider how an individual can change the course of a life by stepping up to stop sexual harassment and violence.

KS3 YEAR 8 BIRO BUGS

Year 8 students have been exploring how to create detailed tonal biro bug studies using a variety of mark-making techniques.

Here are a few excellent examples of the work produced by our students. They have shown great skill, patience and sensitivity with a challenging media.

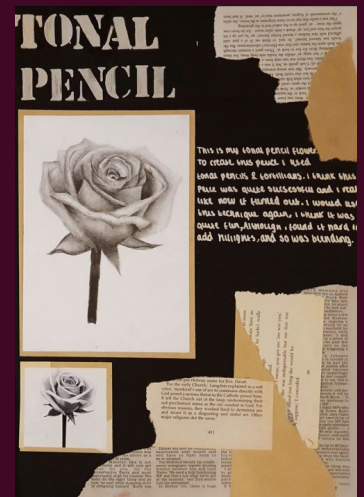
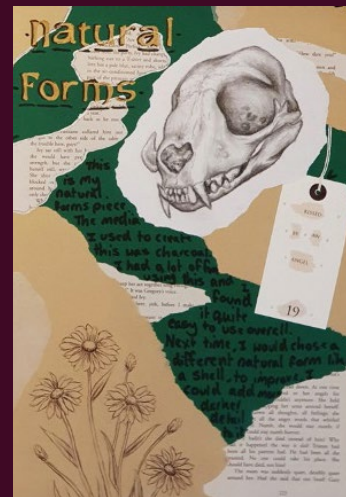


KS4 YEAR 10 GCSE ARTISTS

When an impressive start the Year 10 artists have made in their exploration of media and techniques so far!

They have spent the autumn term exploring a range of media, including tonal pencil, watercolour, oil pastel and acrylic.

At this time, students are discovering and developing a range of techniques to depict natural forms through observation.



KS5 A-LEVEL ARTISTS

Well done to all our students who submitted work for the Rugby Open Exhibition 2023. It has been a popular exhibition this year, with hundreds of local artists and students applying for limited spaces.

We were very honoured to see our students selected to proudly display their work.



"Red Lips" 2023 - Amber H

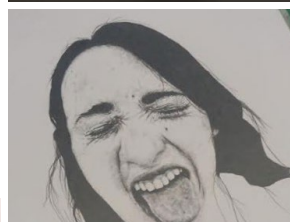


"George Michael 2023 - Lyla C

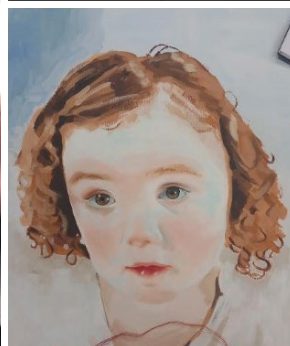
A huge congratulations to Emilie for receiving the Highly Commended (Youth Category) award in this year's Rugby Open Exhibition.



"Growing Old Disgracefully" - Emilie F



Pencil portrait by Joseph M, Year 12



Portrait by Niamh I, Year 13



Sixth form students engaging in the school's Drop Everything and Read initiative



Year 12 students painting phase experiments and photography theory work.



WHO KILLED MISS SHEFFIELD?

Year 13 Criminology students had a real mystery on their hands – who killed Miss Sheffield?

Dressed as personnel you would find in a criminal investigation such as police officers, prisoners, crime scene investigators and forensic scientists, students had to engage in a thrilling criminal investigation activity and work together to piece together clues to unveil the identity of Miss Sheffield's killer.



CRIMINOLOGY AND LAW TRIP TO THE NATIONAL JUSTICE MUSEUM

Year 13 Criminology and Law Students are invited to take part in the upcoming outing to the National Justice Museum in Nottingham.

Students will have the opportunity to take part in a Courtroom Workshop and a Museum Workshop.

The trip will take place on Thursday 21st December.

NATIONAL JUSTICE MUSEUM TRIP
YEAR 13 CRIMINOLOGY & LAW STUDENTS
THURSDAY 21ST DECEMBER
NJM NOTTINGHAM
RETURN YOUR SLIP TO MISS SHEFFIELD BY 27/10/23
PARENT PAY BY 17/11/23
COURTROOM WORKSHOP
MUSEUM WORKSHOP

COMMUNITY BOOK SWAP

We are delighted to let you know the English Department has launched a community bookshelf in reception!

You now have the opportunity to bring in any preloved books from home and swap them for any of the books brought in by our community – staff, students and parents!

The aim is to reuse and reinspire, to give our second-hand books another chance. They could be cooking books, romance books and biographies – ALL books are welcome.

We already have a fantastic collection to feast your eyes on, including a lot of interesting revision guides.

Pop down ASAP because it will be first come, first served.

If you would like any more information, please email warrilowl@ashlawn.org.uk OR rogersl@ashlawn.org.uk.

Community Book Swap

Bring in your preloved books that you no longer need and swap them for a book on Ashlawn's Community Bookshelf!

Located in reception.



For more information get in touch at warrilowl@ashlawn.org.uk or rogersl@ashlawn.org.uk



Y7 and Y9

WELCOME TO OUR BOOK CLUB
Want to read with friends?
Want book recommendations?
Come to W3 Wednesday Lunchtimes!

YEAR 7 AND 9 BOOK CLUB

This term the English Department has launched our very own Book Club!

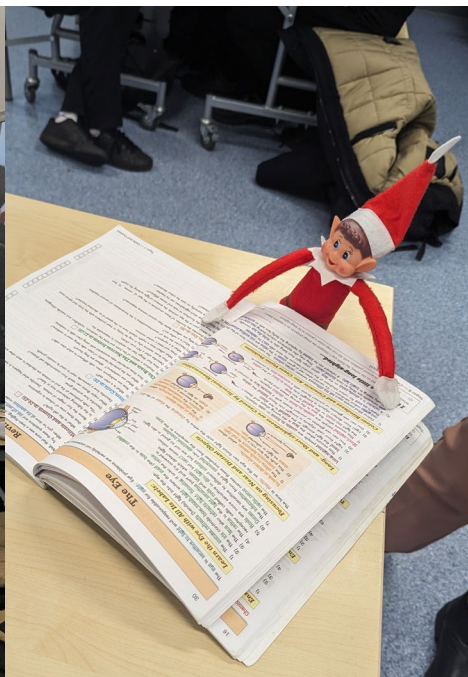
We are hoping to bring together fellow book enthusiasts; our avid readers, writers, library users and fans of the classics, new age, thrillers, action and any other genre that excites you!

If you are reading this and feel like this is YOU, please come along on Wednesday lunchtimes to W3 and be prepared for a fantastic opportunity of book swaps, recommendations, group reading sessions and independent reading time!

A-LEVEL TRIP TO THE GUARDIAN OFFICES IN LONDON

30 A-Level students visited the Guardian offices in London for a journalism and news editing workshop on 30th November.

The students worked in a newsroom, edited their own front pages and learned how to edit a newspaper.



YEAR 11 BIOLOGY REVISION SESSION

Our Year 11 Biology students are showing their dedication to excellence with 130 attendees at a recent revision session!

YEAR 12 AND 13 NEWSPAPER

This term, our sixth-form students have worked hard to create an online newspaper. Over the course of this year, they will be adding a range of editorials on areas that will inspire them. Keep checking back to see what they are working on!

I, DANIEL BLAKE THEATRE TRIP FOR YEAR 12 AND 13 MEDIA STUDIES STUDENTS

Year 12 and 13 Media Studies students recently went to watch 'I, Daniel Blake' at the Belgrade Theatre in Coventry.

Students were enthralled by the amazing performances, with one student commenting:

"This trip provided an incredibly enriching experience, offering insights that are truly invaluable. Through the actors' portrayal, we gained a genuine understanding of the challenges and hardships people endure. This trip was not only educational but also very enjoyable, and I hope more individuals can join us to fully engage with its impact. I would love the opportunity to watch it again."

KEY STAGE 3 GEOGRAPHY

Year 7 students has been learning about rivers this half term in their unit, "How do rivers shape our world and our lives?"

They've played a game to help them understand the hydrological cycle, made pop-up drainage basins and created cartoon strips showing the journey of a water droplet through the hydrological cycle and how a river's bedload changes as it is transported downstream.

In lessons about river landforms, they made an annotated play doh landforms. In their DEARSS lessons, they've engaged with articles about flooding.

With climate change meaning that flood events are increasingly frequent, it is important that all our young people understand how drainage basins and rivers work.



MUSIC TO OUR EARS

A huge congratulations to Poppy M in Year 13, who has secured places for next year at the Royal Birmingham Conservatoire and the Royal Welsh College of Music and Drama to study flute and bassoon.

Congratulations Poppy, we are so proud of you!

SIXTH FORM NEWS

YEAR 12 FIRST AID COURSE

Year 12 students successfully took part in a First Aid course with the Tolan training company, learning about CPR and automated external defibrillator (AED) awareness.

All participating students had a go at doing CPR for 60 seconds, which they soon realised was a tough job!

The students really engaged with the sessions and were polite and respectful throughout.

It was an enjoyable day and we are pleased we have been able to offer this experience to the students in Year 12 as part of our PSHE programme for Sixth Form.

We hope that the students found the day valuable and are able to apply their new skills should the occasion arise.



YEAR 13 EARLY ENTRY/ OXBRIDGE CLUB

Our Year 13 Medicine and Dentistry students and those applying for Oxbridge have impressed us over the last few weeks, taking it upon themselves to support each other and practice their interview skills.

They have formed a club and over lunchtime they challenge each other with difficult interviews. You can see them here in the photo working in small teams of three - one is the interviewee, one the interviewer and one taking notes for feedback.

They are such good examples of aspiration and excellence in our community.

YEAR 13 STUDENTS DEVELOP THEIR INTERVIEW SKILLS

Year 13 students have been practicing and enhancing their interview skills with local employers from the Rugby Rotary Club, ahead of their university and apprenticeship interviews later this year.

Following a series of preparatory interactive sessions in tutor time, they got to put their skills and techniques into action, and it was so good to see them confidently approaching these interviews, maintaining eye contact throughout and developing their answers with specific examples from their studies and wider extra-curricular activities.

They will be given feedback to help them be successful in their next interview, for real this time!





ASHLAWN
SCHOOL



At Ashlawn we...

CARE

COMMUNITY

We value every member of the Ashlawn family and treat each other with kindness and compassion.

ASPIRATION

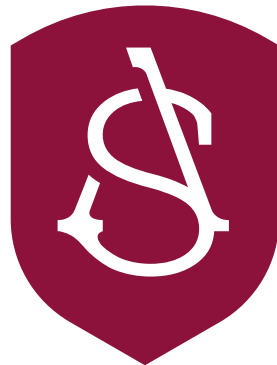
We work hard and make the most of exciting and challenging learning experiences, in order to open up the world around us and achieve our dreams.

RESPECT

We respect each other and our differences. We respect our learning environment and appreciate everyone's right to the best possible experience at Ashlawn.

EXCELLENCE

We are committed to trying our best and achieving the highest standards in our love of learning, so that we can be the best versions of ourselves.



ASHLAWN
SCHOOL

Our best, always

Ashlawn School
Ashlawn Road, Hillmorton, Rugby, CV22 5ET

Telephone: 01788 573425
Email: info@ashlawn.org.uk
www.ashlawn.org.uk

 [@ashlawnschoolrugby](https://www.facebook.com/ashlawnschoolrugby)