



ASHLAWN SCHOOL

Newsletter Issue Date:
Friday 23 September 2022

Tel: 01788 573425

TL Proud to be part of the
Transforming Lives
EDUCATIONAL TRUST

Email: info@ashlawn.org.uk

Website: www.ashlawn.org.uk

Message from the Principal

It was fantastic to welcome the parents of our Year 12 students to a Parent and Carer Information event this week. We really appreciate the parents and carers who took the time to learn about our Sixth Form and the way that we can work together to ensure that our young people experience success.

The home-school partnership is widely recognised for its significant impact on a student's motivation, engagement, behaviour, and academic and social outcomes. Attending school events is a great start in forming that relationship.

As a school, it is important that we create opportunities for parents and carers to be involved in their child's learning. We do this through parent information meetings, parent meetings to discuss student progress, reports on academic progress and attainment and the opportunity to keep track of home learning. Edulink is a vital communication tool and we ask all parents to download the app. The information that allows us to create Edulink accounts is received from your child's previous school electronically. We process that information as quickly as possible after we receive it. We are actively encouraging some schools to send us the information.

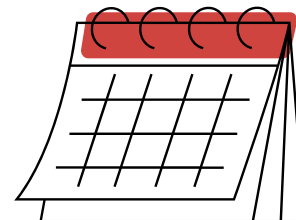
Research has found that family involvement in school-based learning activities is closely linked with student outcomes at school. In fact parent involvement has a larger impact on student achievement than most other interventions. But what does that mean to parents and carers?

The most useful thing you can do is show interest in your child's day and work at school. While it is true that young people of secondary age are often more hesitant to share every detail of their day, showing an interest allows your child to speak to you when they need to. Asking about lessons, what work they are doing or inviting them to explain something that they have learned is also a great way of showing support.

Ensuring that they have a quiet space to complete their school work at home is also important right from the start of Year 7. Developing the right independent learning habits will stand them in good stead for years to come.

We really do welcome the opportunity to work with you - the success of the young people at our school is our shared goal.

Siobhan Evans
Principal



Dates for the Diary

Saturday 24 September

Year 6 Ashlawn MFL Aptitude Test at Ashlawn School (For children registered for the assessment)

Saturday 24 September

PTA Second Hand Uniform Sale in the Ashlawn Dining Room 10-11.30. Cash and card payments accepted.

Monday 26 September

Year 11 and Year 13 Group Photographs

Monday 26 September - Friday 30 September

Year 7 CATS Tests



ASHLAWN SCHOOL

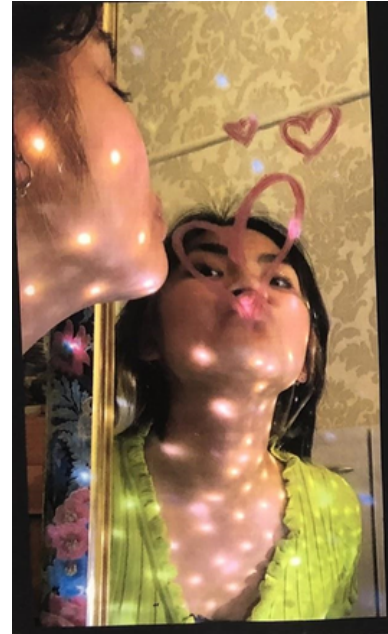
Newsletter Issue Date:
Friday 23 September 2022

Tel: 01788 573425

TL Proud to be part of the
Transforming Lives
EDUCATIONAL TRUST

Email: info@ashlawn.org.uk

Website: www.ashlawn.org.uk



This week we look back on some amazing success stories from the Arts Faculty.
2 of our A level Photography students received A* grades and 10 of our Art A level students received A* grades.

We are sure you agree this is an amazing achievement.

**WELL
DONE**



ART

Of the week





ASHLAWN SCHOOL

Newsletter Issue Date:
Friday 23 September 2022

Tel: 01788 573425

TL Proud to be part of the
Transforming Lives
EDUCATIONAL TRUST

Email: info@ashlawn.org.uk

Website: www.ashlawn.org.uk

Recruiting now Teaching Assistant L2



Teaching Assistants act with honesty and integrity; have strong subject knowledge, keep their knowledge and skills as teaching assistants up-to-date and are self-critical; forge positive professional relationships; and work with others in the best interests of their students.

Hourly rate:	NJC07 - NJC11
Hours:	30 per week
Work pattern:	Monday to Friday
Working weeks:	Term time plus 3 days
Contract:	Permanent

TL
Transforming Lives
EDUCATIONAL TRUST

If you are interested in this job opportunity, please apply online today by downloading an application form from our website, TLET vacancies, or get in contact via careers@tlet.org.uk or call 01788 593108.

The post holder will have a shared responsibility for the safeguarding of all children and young people.



Auditions for School of Rock

Andrew Lloyd Webber's School of Rock is our June 2023 musical (9 - 18 June)


We are holding auditions for the children in this show on:

Saturday 15th October and Sunday 16th October 2022



If you would like to audition for Rugby Theatre's School of Rock The Musical please visit

www.rugbytheatre.co.uk/category/audition/



Please be courteous to our neighbours and park sensibly at the beginning and the end of the school day.

Do not block driveways or park on the grass verges as this causes an obstruction.

For more information email the club Chairman: malcolmharding@mail.com

Interested in playing chess, learning more about the game, meeting others of your age with similar interests....

Join – Rugby Chess Club

Friendly games, strategic learning, option to take part in local and national competitions. All at your pace and to support your level.

Meet on the first and third Monday of each month, (excluding Bank Holidays and August) at Rugby Workers Club, 32 Oliver Street, CV21 2ET From 7pm – 8pm for Juniors*

New Adult Members also welcome, they meet between 7.30pm – 9.30pm on the same nights. Please note that competitions can be at home and away.

*The parents and carers of the juniors participating need to become members of the Rugby Workers Club (£10 annually and a one off £5 joining fee) and need to stay on site during the club. It is a £1.00 suggested donation for the Rugby Chess Club at each meeting.

First meeting free – pop along to the next meeting or email malcolmharding@mail.com for more information.



It has been great to see so many students attending the amazing enrichment activities we have on offer this term. The full programme is attached; please remember to use your child's school email address to sign up. The link can be found on the "Sign Up Here" button. We are aware some students are yet to receive their school email addresses. They will receive them next week.

Any questions please email Mrs Stanley-Williams stanleywilliamsc@ashlawn.org.uk

We look forward to seeing even more of what our students choose to learn and engage in to extend themselves further. Look out for photos next week.



ASHLAWN SCHOOL

Newsletter Issue Date:
Friday 23 September 2022

Tel: 01788 573425


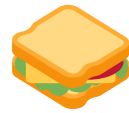


Email: info@ashlawn.org.uk

Website: www.ashlawn.org.uk

Menu WEEK COMMENCING 26 09 22



Monday	Tuesday	Wednesday	Thursday	Friday
Chicken filets, wedges and salad	Peri peri chicken flatbread and salad	Jerk chicken, rice and homemade coleslaw	Sweet and sour chicken bites, rice and sauce	Sausage and chips
Quorn fillets, wedges and salad	Peri peri quorn flatbread and salad	Jerk quorn, rice and homemade coleslaw	Quorn sweet and sour with rice	Moving mountain (vegetarian burger) and chips
Jacket potato and cheese	Pasta king - meat	Jacket potato and tuna	Pasta king - meat	Jacket potato and beans
Chicken pasta salad	Pasta king - veg	Rollover hotdog	Pasta king - veg	Chicken fillets
Coronation chicken sandwich	Hot chicken curry wrap	BLT sandwich	Chicken burger	Hot n spicy chicken with mayo sandwich
Ploughmans sandwich	Hot n spicy chicken with mayo sandwich	Cheese and tomato sandwich	Cheese and ham sandwich	Ploughmans sandwich
	Tuna and cucumber sandwich		Egg and cress sandwich	

Attendance and Punctuality

Good attendance and punctuality to school is vital if students are to succeed and reach their full potential. Every day that a student is late will impact their learning time in school.

We monitor attendance and punctuality very closely in order to ensure that ALL students arrive at school on time, ready to learn.

We expect ALL students to be in school by 8.40 am, ready to start form time at 8.45 am. If students arrive late to form time, they will be marked as late regardless of what time they were on site. If students arrive late on two occasions or more, then they will attend a same day detention for 15 minutes.

Although we want every student to achieve 100% attendance, we understand that there are times when they may not be able to come to school as they are really unwell. If this happens it is vital that you contact school via EDULINK or by phoning 01788 532831.

Please do not email individual teachers or their Head of Year.

If at any time you feel that you need support with your child's attendance or punctuality then you must talk to us.

Your child's Form Tutor and Head of Year are here to support them throughout their time in school.

Minutes Late Per Day	Days of Lost Learning
5	3.5
10	7
15	10.5
20	14
30	21

% Attendance	Days of Lost Learning
100	0
95	10
90	20
85	30
80	40 (8 school weeks)



ASHLAWN SCHOOL

Newsletter Issue Date:
Friday 23 September 2022

Tel: 01788 573425

TL Proud to be part of the
Transforming Lives
EDUCATIONAL TRUST

Email: info@ashlawn.org.uk

Website: www.ashlawn.org.uk

Social Media is a big part of society and we want to offer you as much guidance as possible to allow you to support your child.

Our personal development curriculum teaches all students about the dangers of social media. Please be aware that if you have created a social media account for your child with a fake age, they could appear to other users to be significantly older than they are. This is extremely dangerous and younger students may not have the maturity to use these platforms in a safe manner.

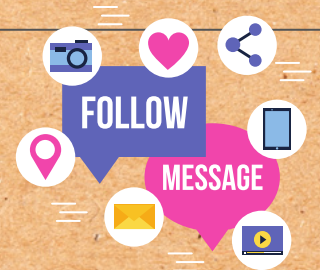
A reminder of the minimum age for the most popular social media platforms:



The biggest threat to our children's online safety are the strangers that they may meet online. For this reason, children should have any social media accounts set to private. If you are unsure of how to do this, please ask a friend or visit internetmatters.org



Focus on Social Media



What can I talk to my child about?

Talk to support

Most importantly, your conversations should always be open and honest. If children fear the loss of their favourite device then they are more likely to keep things hidden from you. Regular conversations and chats about their social media activity will help them to remember the rules. Make sure you have all of your child's passwords. This will allow you to access all of the social media activity that your child is part of. You will be able to follow their conversations and check that their friends and followers are real people who are an everyday part of your child's life. Remember who has paid for the phone and the account - you have the right to check and monitor the usage.

Rules for all

As a family, decide on some internet rules - when can social media be used and when can't it? Set boundaries and stick to them. Try to leave all devices outside of bedrooms so children are not tempted to engage with others when they should be sleeping. Children find it very hard to resist these temptations, sometimes parents need to take the temptation away!

Privacy for safety

If you have made the decision for your child to have a social media account, make sure it is locked down to the highest privacy settings. If you are unsure of how to do this, please download a help leaflet below. As part of our personal development curriculum our students are taught about how uploading photos online can be dangerous. We encourage all students to think carefully before sharing a photo online and definitely no school uniform photos as this can lead a stranger to their location.

Location settings

Many of the social media apps have built in location tags which prints the child's location as the photograph is uploaded. This can also lead strangers to children if this is switched on. We encourage all students to switch this option off in the app settings. If you are unsure of how to do this, please visit internetmatters.org

When things go wrong

Sometimes children make mistakes and share information or images which they regret. Please inform school if this is the case and together we can support you to contact the appropriate external agencies to support you and your child. If your child receives indecent images then this should be reported immediately to the police.



ASHLAWN SCHOOL

Newsletter Issue Date:
Friday 23 September 2022

Tel: 01788 573425



Email: info@ashlawn.org.uk

Website: www.ashlawn.org.uk

Safeguarding Advice

What to do if you are worried about your, or someone else's safety.

Tell a trusted adult at school.

We are here to help, and our team of Designated Safeguarding Leads will provide support. You can also call on the following number: 01788 573425.

If you are in immediate danger then phone 101 or 999.

Here are some other ways things you can get the help you need:

- Tell a trustworthy family member or safe adult who may be able to help you
- Call Childline on 0800 1111 and talk through how you are feeling and your concerns
- Email the Designated Safeguarding Leads at school at safeguarding@ashlawn.org.uk
- Speak to Young Carers if you are looking after someone at home. Tel: 02476 217740
- Look online for support from the Family Information Service at www.warwickshire.gov.uk/childrenandfamilies
- If you feel unsafe or in danger call the council helpline on 01926 414144

If you are struggling with your mental health and want some reassurance and advice, then contact your form tutor or Head of Year. They would love to hear from you and they will help alleviate your worries.

Mrs Pountney

Assistant Principal and Designated Safeguarding Lead

**Safeguarding is
Everyone's
Responsibility**

The Family Information Service can provide a wide range of information/support/ referrals for families in Warwickshire either via our helpline or on a face to face basis.

FIS Brokerage Service is a 1:1 early intervention service which can be used to support families with children age 0 to 25 living in Warwickshire to access services where there are barriers and/or complex needs.

To access this service please contact them using the methods below:

fis@warwickshire.gov.uk

• [Twitter – @WarksFIS](https://twitter.com/WarksFIS)

• [Facebook – Warwickshire Family Information Service](https://www.facebook.com/Warwickshire-Family-Information-Service/)

• <https://www.warwickshire.gov.uk/children-families>

01926 742 274.

The Family Intervention Service can help you with topics such as:

- family relationships
- finance
- housing
- parenting support
- special educational needs and disabilities (SEND)
- childcare
- health and wellbeing

Please don't hesitate to get in touch. They are there to help!

Mrs Pountney

Assistant Principal



Free Sanitary Items

Students can collect free sanitary wear at school. They are available from Reception, Student Services and the PE changing rooms. Tampons and sanitary towels are available.

Mrs Pountney

Assistant Principal

Food Bank

If you are struggling financially and would like a food parcel or food bank voucher, please contact Mrs Pountney or Mrs Lavery as we have a few food parcels left and we are happy to deliver.

