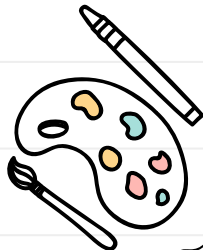
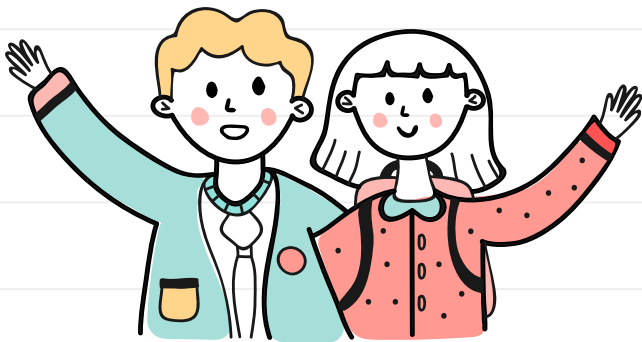
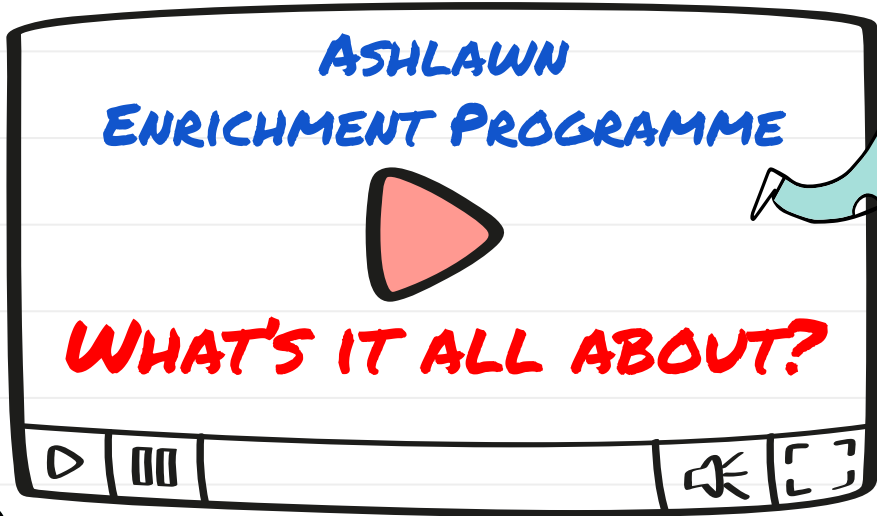
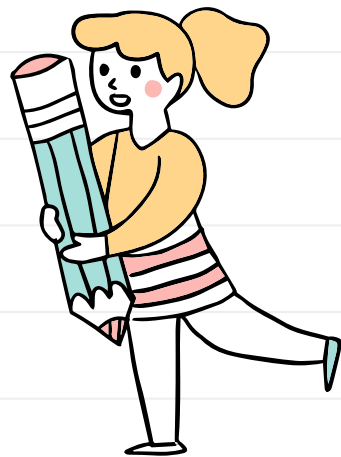
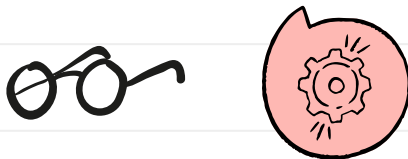
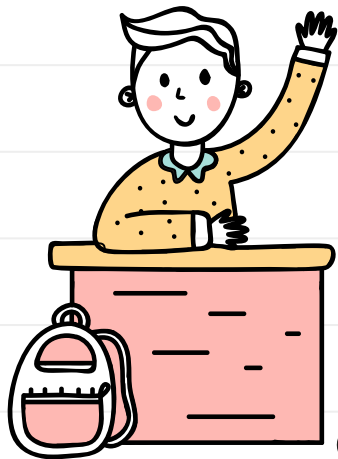


**"ENRICHMENT - ACTIVITIES WHICH  
EXTEND STUDENTS' EDUCATION,  
SKILLS, KNOWLEDGE AND ABILITIES  
BEYOND THE SCHOOL CURRICULUM."**





# ENRICHMENT TIMETABLE

## AUTUMN TERM 2022

[SIGN UP HERE](#)

### MONDAY

#### LUNCHTIME

- [Basketball Club \(Yr 10 & 11\)](#)
- [Guitar Club \(All Years\)](#)
- [Creative Writing \(All Years\)](#)

#### AFTER SCHOOL

- [Gardening \(All Years\)](#)
- [Music Tech Club \(All Years\)](#)
- [Vox - Music \(All Years\)](#)

### TUESDAY

#### LUNCHTIME

- [Getting ready for university \(Yr 12 & 13\)](#)
- [Basketball Club \(Yr 7, 8 & 9\)](#)
- [Ukulele Club \(All Years\)](#)

#### AFTER SCHOOL

- [Boys Football & Rugby Training \(Year 7, 8, 9\)](#)
- [FakeAway Meals \(Yr8&9\)](#)
- [Dance \(Year 7, 8 & 9\)](#)
- [Astronomy \(All Years\)](#)
- [History through film \(Yr 7 & 8\)](#)
- [Ecstatic Dance \(Yr 8 - 11\)](#)

### WEDNESDAY

#### LUNCHTIME

- [Trampoline \(Yr 10 & 11\)](#)
- [Badminton \(Yr 7, 8, 9\)](#)
- [German Culture \(Yr 7- 9\)](#)
- [Spanish Reading \(Yr 10 & 11\)](#)
- [Gardening \(all years\)](#)

#### AFTER SCHOOL

- [Boys Football & Rugby Training \(Year 10 & 11\)](#)
- [Wreath making for Xmas \(All Years\)](#)
- [Bike Club \(Yr 7, 8 & 9\)](#)
- [Dungeons and Dragons \(All Years\)](#)
- [Board Games \(All Years\)](#)
- [Patchwork Xmas Decorations \(All Years\)](#)
- [Bonnie & Clyde Rehearsals \(KS4\)](#)
- [Concert Band \(All Years\)](#)

### THURSDAY

#### LUNCHTIME

- [Yoga for Beginners \(All Yrs\)](#)
- [Trampoline \(Yr 8 & 9\)](#)
- [Badminton \(Yr 10 & 11\)](#)
- [Sign Language \(All Years\)](#)
- [History of the British Empire \(Yr 9\)](#)
- [Keyboard Club \(All Years\)](#)
- [Japan Club \(All Years\)](#)

#### AFTER SCHOOL

- [Girls Netball & Football Training \(All\)](#)
- [Politics and Model Parliament \(Yr 10, 11, 12 & 13\)](#)
- [Bonnie & Clyde Rehearsals \(KS4\)](#)
- [Handball \(Year 7, 8 & 9\)](#)

### FRIDAY

#### LUNCHTIME

- [German Reading \(Yr 10 & 11\)](#)
- [Jigsaw Puzzles \(All Years\)](#)

#### AFTER SCHOOL

- [Chess Club \(All Years\)](#)
- [Xmas Cross Stitch \(All Years\)](#)
- [Irish Dancing \(All Years\)](#)
- [Circuit Training \(Yr11\)](#)
- [Girls Rugby \(Yr 7 - 11\)](#)
- [Jazz Band \(All Years\)](#)

# BASKETBALL

SIGN UP HERE

AVAILABLE TO:

YEAR

10 & 11



Starts:  
Sept 2022

End:  
Nov 2022

Venue:  
Sportshall

Staff Lead:  
Mr Riley

 **ASHLAWN**  
**ENRICHMENT**  
PROGRAMME  
2022/23

12.40 - 13.10pm **MONDAY**  
(Trainers needed)

# GUITAR

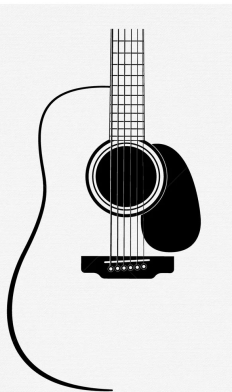
Monday Lunchtime

## CLUB



AVAILABLE TO:

ALL  
YEAR  
GROUPS



# UKULELE CLUB

Tuesday Lunchtime



# KEYBOARD CLUB

Thursday Lunchtime



Start Date:  
w/c 19th Sept

End Date:  
TBC

Venue:  
Music

Staff Lead:  
KBO/MWI/TBA

 **ASHLAWN  
ENRICHMENT  
PROGRAMME  
2022/23**

[SIGN UP HERE](#)

# GETTING READY FOR UNIVERSITY

Starting Tuesday 20/9/22

 **ASHLAWN ENRICHMENT**  
PROGRAMME  
2022/23

Start:  
20/9/22

Ends:  
16/11/22

Venue: S3

Staff Lead:  
Mrs Cunliffe



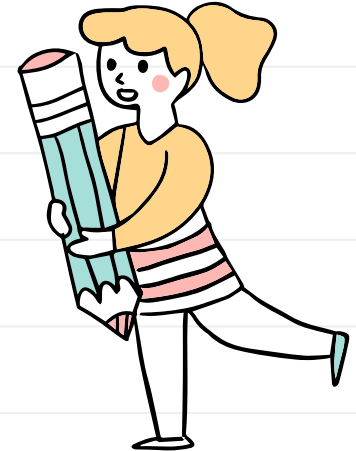
1063764776

S3 12.30-1.15

[SIGN UP HERE](#)

AVAILABLE TO:

Year  
12 & 13



# BASKETBALL

SIGN UP HERE

AVAILABLE TO:

YEAR  
7, 8 & 9



Starts:  
Sept 2022

End:  
Nov 2022

Venue:  
Sportshall

Staff Lead:  
Mr Ford

12.40 - 13.10pm TUESDAY  
(Trainers needed)

 **ASHLAWN**  
**ENRICHMENT**  
PROGRAMME  
2022/23



# TRAMPOLINING

Starting Wednesday 21/9/22

You will need to bring and wear Tracksuit bottoms, socks



East Gym - 12.30-1.15pm

[SIGN UP HERE](#)

AVAILABLE TO:

Year  
10 & 11

Start:  
21/9/22

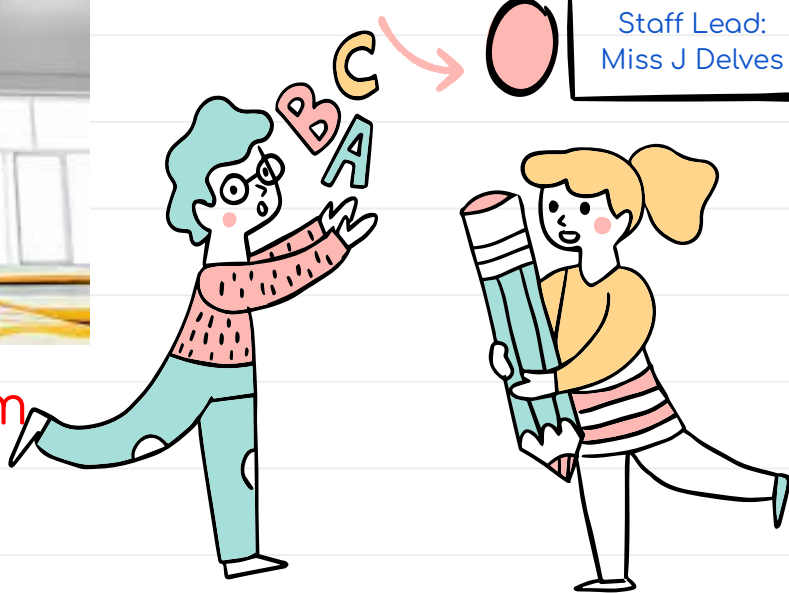
Ends:  
October Half  
Term

Venue: East  
Gym:

Staff Lead:  
Miss J Delves

 **ASHLAWN  
ENRICHMENT**

PROGRAMME  
2022/23





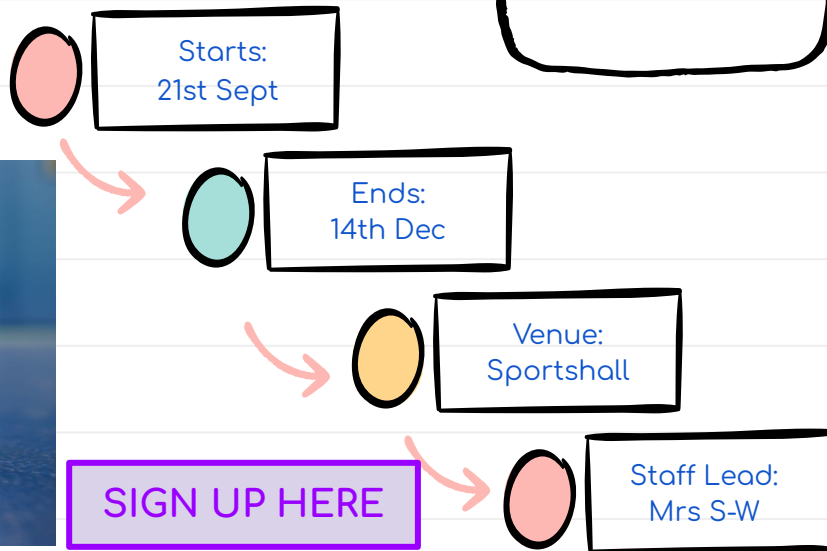
# BADMINTON

Thursday Lunchtime  
12.40-1.10pm

Come along to refine and practice your Badminton skills or challenge your friends to a match *\*trainers needed.*

AVAILABLE TO:

Year  
7, 8 & 9



 **ASHLAWN  
ENRICHMENT**  
PROGRAMME  
2022/23



# GERMAN CULTURE

**YEAR 7, 8 + 9**

Start Date  
28th September

End Date:  
14th December

Venue:  
S8

Wednesday lunchtime  
12:40 - 13:10pm

**AVAILABLE TO:**  
Any  
students  
in Years  
7, 8 and 9

Staff Lead: Mrs  
Goodland

[SIGN UP HERE](#)

Do you know your Berliner from your Bratwurst?

Come and discover more about German culture.

We will look at German celebrations, customs and events through songs, games and poems.

# SPANISH READING CLUB

Want to improve your Spanish, widen your vocabulary, improve your pronunciation and experience 'real Spanish'?

Together we will read a range of authentic texts, starting with a novel, practising reading aloud and translating extracts.

All abilities welcome =]



Wednesday Lunchtime  
12:35 - 13:05

SIGN UP HERE

AVAILABLE TO:

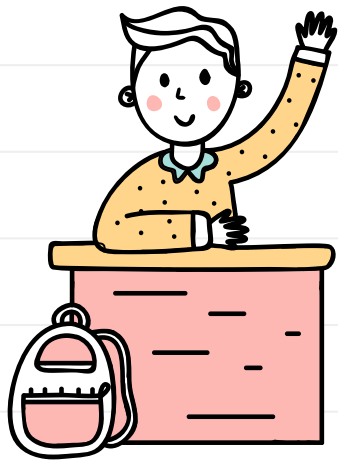
Year 10  
and 11  
Spanish  
Students

Start Date:  
28th  
September

Venue:  
S16

Staff Lead:  
Mr Massey





Together we will begin to learn some of the basics of yoga with a Yogi called, Adriene on Youtube. Most sessions will be about 20 minutes to give us a chance to eat, change and not feel rushed.

If you have your own mat then please bring that, feel free to drop it into DR1 before am reg'. I have got spare mats too though. Please bring comfy clothes and a drink.

To participate safely, please make sure you are not injured.

AVAILABLE TO:

ALL  
YEAR  
GROUPS

Start Date:  
22.09.22

End Date:  
22.12.22

Venue:  
DR1

Staff Lead:  
MRS GARNER



JOIN THIS GOOGLE  
CLASSROOM:  
dllhnz7

SIGN UP HERE

 **ASHLAWN  
ENRICHMENT  
PROGRAMME  
2022/23**

# YOGA FOR BEGINNERS

THURSDAYS AT LUNCHTIME

# TRAMPOLINING

Starting Thursday 22/9/22

You will need to bring and wear Tracksuit bottoms and socks



East Gym 12.40 -1.10pm

[SIGN UP HERE](#)

AVAILABLE TO:

Year

8 & 9



Start:  
22/9/22



Ends:  
October Half  
Term



Venue: East  
Gym:



Staff Lead:  
Miss Essam

 **ASHLAWN  
ENRICHMENT**

PROGRAMME  
2022/23

SEAT LANDING

STRADDLE

BACK LANDING

TUCK

SOMERSAULT

CATS CRADLE

ROLLER

PIKE



# BADMINTON

Wednesday Lunchtime  
12.40-1.10pm

Come along to refine and practice your Badminton skills or challenge your friends to a match *\*trainers needed.*

AVAILABLE TO:

Year  
10 - 11



SIGN UP HERE



Starts:  
22nd Sept

Ends:  
15th Dec

Venue:  
Sportshall

Staff Lead:  
Mrs Brown

# SIGN LANGUAGE CLUB

Thursday Lunch

Come and learn sign language and play games at the same time!

No experience needed.

AVAILABLE TO:  
All year groups



HELLO



GOODBYE



PLEASE



THANK YOU



YES



NO



Start Date: 20/09



End Date:  
16/12



Venue:  
Lab 5

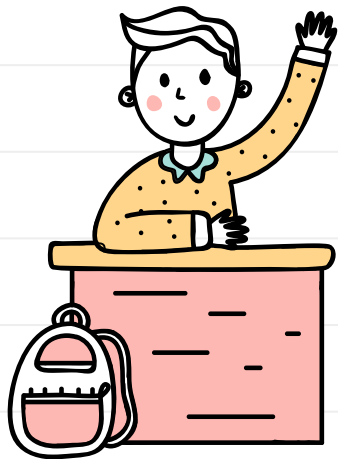


Staff Lead: Mrs  
Johnson-Slaney



SIGN UP HERE





# HISTORY OF THE BRITISH EMPIRE

AVAILABLE TO:  
Year 9

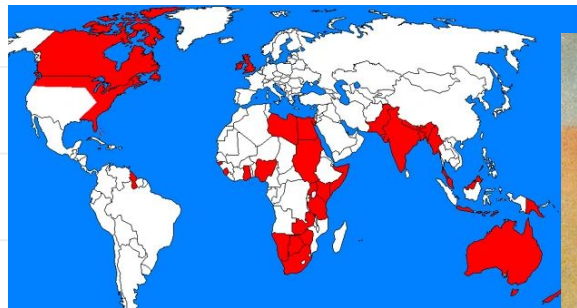
A study of the positive and negative impacts of the British Empire on the development of nations around the world.

Thursday Lunchtime

Start Date:  
03/11/22

End Date:  
15/12/22

Venue:  
W14



 **ASHLAWN**  
**ENRICHMENT**  
PROGRAMME  
2022/23

Staff Lead:  
Mr Fogarty

[SIGN UP HERE](#)



**AVAILABLE TO:**  
Year 10 and 11  
German  
students

Start Date: 30th  
September

End Date:  
9th December

Venue:  
S8

Staff Lead:  
Mrs Goodland

# GERMAN READING CLUB

Friday lunchtime 12:30 - 1:00pm

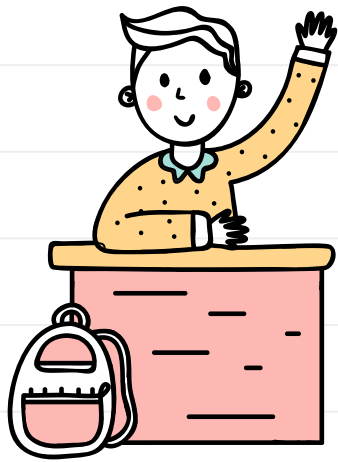


Want to improve your German, widen your vocabulary and experience "real German" ?

Together we will read a variety of stories, news articles and poems.

All abilities welcome.

[SIGN UP HERE](#)



Do you need help with any unfinished jigsaw puzzles? Would you like a new challenge? Try a variety of jigsaw puzzles of different sizes, themes and levels of difficulty.

You can bring jigsaw puzzles from home!

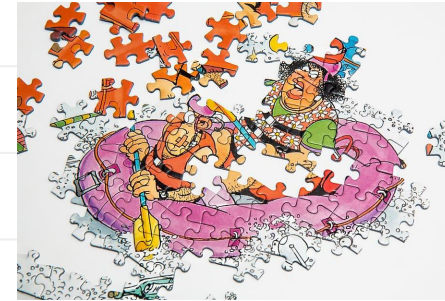
AVAILABLE TO:

ALL YEAR  
GROUPS

Start Date:  
23rd Sept.

End Date:  
9th Dec.

Venue:  
S11



SIGN UP HERE

# JIGSAW PUZZLES CLUB

Friday lunchtime 12:35 - 13:05

 **ASHLAWN  
ENRICHMENT**  
PROGRAMME  
2022/23

Staff Lead:  
Mrs Sánchez

# GARDENING CLUB

Start Date:  
Mon 26th Sept

End Date:  
Wed 30th Nov

- Mondays after school
- Wednesday lunchtime

Venue:  
Biology garden

Staff Lead:  
Miss Woodhouse



[Google  
classroom  
code:  
77fopgu](#)

AVAILABLE TO:

All year  
groups

SIGN UP HERE

Join us to learn about general gardening skills, planting a range of garden favourites and growing your own tasty edible produce!

All equipment is provided, just bring a change of clothes and shoes that you don't mind getting muddy!

Our club has a focus of being environmentally sustainable where possible

SIGN UP HERE

Learn how to create beats and projects using sampling, and audio and midi recording.

AVAILABLE TO:

ALL  
YEAR  
GROUPS



Start Date:  
26.09.22

End Date:  
TBC

Venue:  
Music

Staff Lead:  
Mr Baidoo

 **ASHLAWN  
ENRICHMENT**  
PROGRAMME  
2022/23

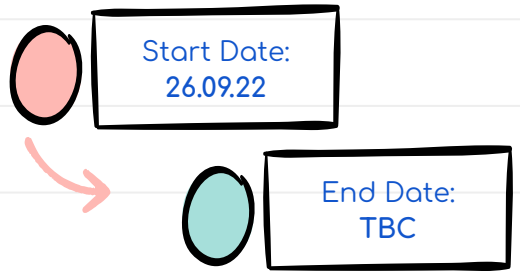
# MUSIC TECH

Monday After School 3.20-4.20pm



Vox is an opportunity for you to join together with other singers and perform pieces from a variety of genres including pop and musical theatre.

**AVAILABLE TO:**  
**ALL YEAR GROUPS**



**ASHLAWN ENRICHMENT PROGRAMME 2022/23**

Venue: Music

**SIGN UP HERE**

Staff Lead: Miss Bond & Mrs Williams

**VOX**

Monday After School 3.20-4.30pm

# BOYS TRAINING NIGHTS

## FOOTBALL + RUGBY



KS3 (Year 7, 8 & 9) Tuesday After school - 3.20 - 4.40pm  
KS4 (Year 10 & 11) Wednesday After school 3.20- 4.40pm  
KS5 RUGBY Wednesday After School 3.20 - 4.40pm

AVAILABLE TO:

KS3  
Tuesday

KS4 & KS5  
Wednesday

[SIGN UP HERE](#)

Start Date:  
20th Sept

End Date:  
TBC



Venue:  
Field

Staff Lead:  
LRY/JFO/CP/GJO

You will need to bring your full PE Kit and change in the changing rooms. If you are doing Football, please bring your football boots and shin pads, if you are doing Rugby please bring boots and your gum shield.

We look forward to seeing you!

\*KS5 Football Training to commence soon with Mr Gospel, more details to follow

 **ASHLAWN**  
**ENRICHMENT**  
PROGRAMME  
2022/23

# FAKEAWAY MEALS

Tuesday after school 3.30 - 5pm in WT2

We love a challenge, and Fakeaways are all about recreating your favourite high fat takeaway dishes and making them healthier. Why not come along and learn how to make your own version of your favourite foods?

Once you have signed up you will be added to a google classroom where you can access all the recipes.

Start Date:  
28th Feb

End Date:  
28th March

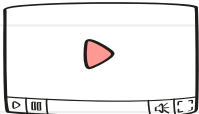
Venue: WT2

Staff Lead:  
Mrs Pountney

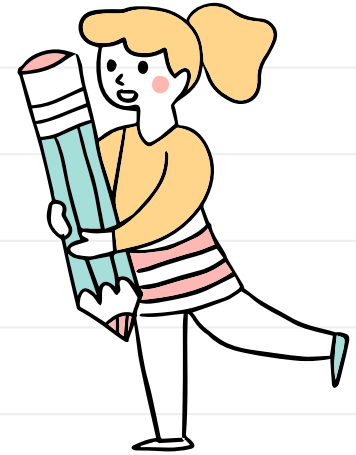
AVAILABLE TO:  
  
Year 8 &  
Year 9



SIGN UP HERE



[Chinese Fakeaway](#)





# KSS DANCE CLUB

Tuesday after school

Please bring your appropriate Dance kit

SIGN UP HERE

AVAILABLE TO:

Year  
7, 8 & 9



Dance Studio:  
3.20-4.20pm

Start:  
20/09/22

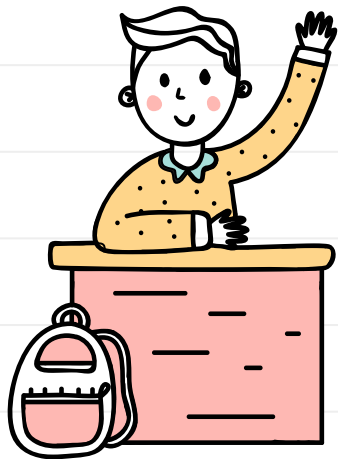
Ends:  
18/10/22

Venue:  
Dance Studio

Staff:  
Mrs Pickering

 **ASHLAWN  
ENRICHMENT**  
PROGRAMME  
2022/23





A chance to use our three telescopes and new observatory building to explore the universe.

Will include some evening sessions as it gets darker.

AVAILABLE TO:

ALL YEAR  
GROUPS



# ASTRONOMY CLUB

Tuesdays after school 3.30-4.30pm

[SIGN UP HERE](#)

4/10/22:

End Date:

Venue:  
L14

Staff Lead:  
Mr Hardiman

 **ASHLAWN  
ENRICHMENT**  
PROGRAMME  
2022/23

# HISTORY

Starting Tuesday 1/11/22

Watch and discuss the accuracy of historical films



W13: 3.30-4.30pm

[SIGN UP HERE](#)

AVAILABLE TO:  
Year  
7 & 8

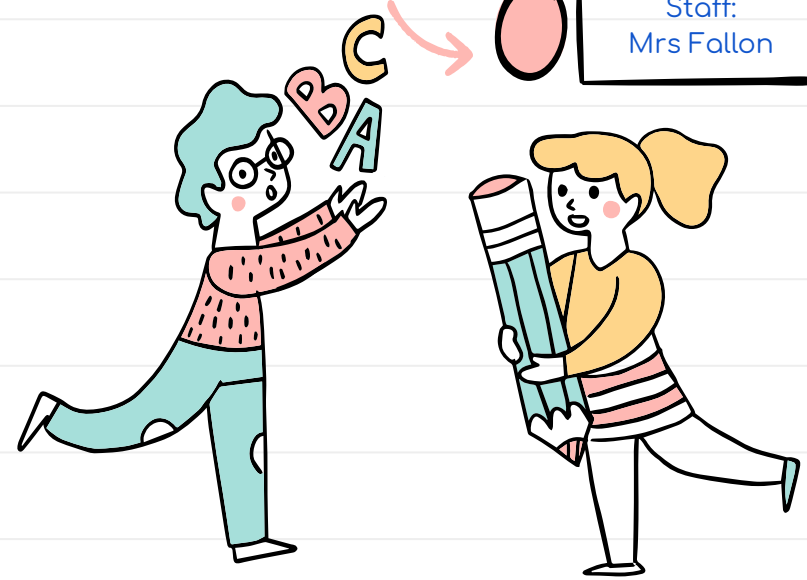
Start: 1/11/22

Ends:  
December

Venue:  
W13

Staff:  
Mrs Fallon

 **ASHLAWN  
ENRICHMENT**  
PROGRAMME  
2022/23



# ECSTATIC DANCE

Starting Tuesday 1/11/22

Meditation : Breathwork : Ecstatic Dance

Learn to connect with the 4 Elements through breathwork and express energy through free flowing dance.

AVAILABLE TO:

Year  
8 - 12

[SIGN UP HERE](#)



Dance Studio:  
3.30-4.30pm

Start: 1/11/22

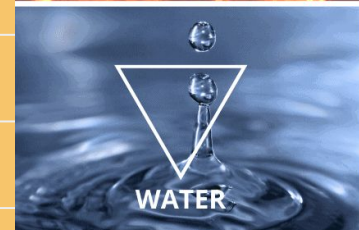
Ends:  
13/12/22

Venue:  
Dance Studio

Staff:  
Mr Rai

 **ASHLAWN  
ENRICHMENT**

PROGRAMME  
2022/23



# WREATH MAKING FOR XMAS

After school on a Wednesday 3.30pm-4.30pm

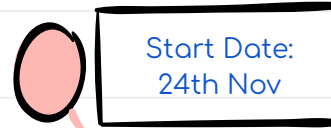
In the run up to Christmas, many homes like to place a wreath on doors to welcome visitors. We will be using foliage and Christmas decorations to create a welcoming wreath for your home or to pass on a present to someone else!

## AVAILABLE TO:

Open to all  
year groups  
and abilities



[SIGN UP HERE](#)



 **ASHLAWN  
ENRICHMENT**  
PROGRAMME  
2022/23



# BIKE CLUB

Wednesdays After  
School,  
3.30 - 4.15 in S1

 **ASHLAWN  
ENRICHMENT**  
PROGRAMME  
2022/23

Do you ride a bike but have no idea how to maintain it or fix it when things go wrong? At Bike Club we will look at and practice how to:

- check your bike is safe to ride,
- clean the key components of your bike
- fix a puncture
- adjust your brakes
- change a gear or brake cable
- set your gears
- straighten a buckled wheel

Bring your bike along if you have it at school but this isn't necessary

AVAILABLE TO:

Year 7, 8, 9

Plus we can chat about bike racing, cycling challenges, watch cycling videos and anything else bike related!



SIGN UP HERE



Start Date:  
28 Sept



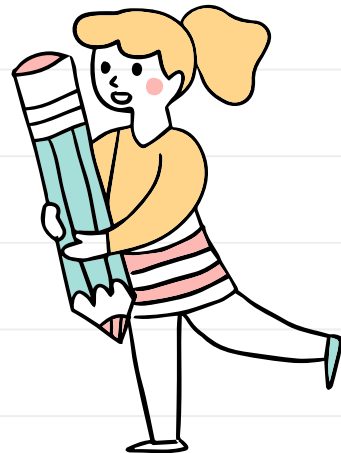
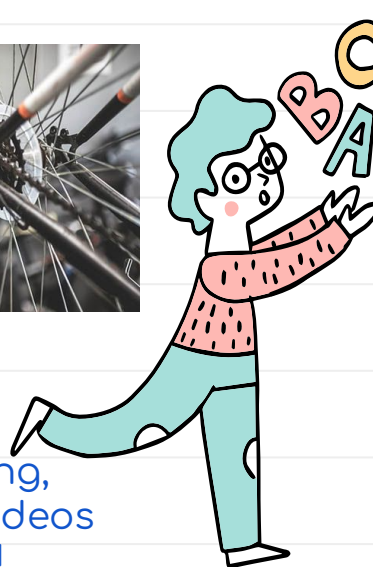
End Date:  
14 Dec

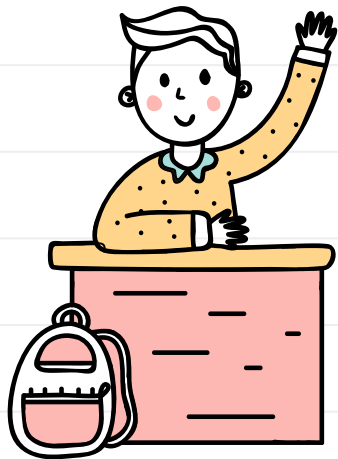


Venue:  
S1



Staff Lead:  
Mr Chodwick





Be a player character, refine your DM skills, create terrain for your campaigns.

Explore the realm.

Just bring yourself at first  
(D&D figure not essential at first)



Start Date:  
21st Sept

End Date: At  
campaign end

Venue:  
Lab 1

 **ASHLAWN  
ENRICHMENT  
PROGRAMME  
2022/23**

Staff Lead:  
Mr Attwell

AVAILABLE TO:

ALL  
YEAR  
GROUPS

SIGN UP HERE

**D&D CLUB**

Wednesday after school 3:30 →

# BOARD GAMES

Wednesdays 3.20 - 4.20pm

A variety of board games (and card games) for all levels of board game player. Just show up and choose a game.



AVAILABLE TO:

All year groups

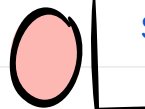


Start Date:  
21st Sept

End Date:  
19th July

Venue:  
L12

Staff Lead:  
Mrs Davis



SIGN UP HERE

 **ASHLAWN  
ENRICHMENT**  
PROGRAMME  
2022/23





**AVAILABLE TO:**

All year groups

[SIGN UP HERE](#)

● After October Half Term

● December last week of term

● Lab 3

● Miss Lodge

# PATCHWORK

# XMAS DECORATIONS

Wednesday 3.30 to 4.30pm

We will make christmas decorations that will hang on a tree, that could be given as a gift

All materials will be provided





# BONNIE + CLYDE

REHEARSALS FOR THE SCHOOL MUSICAL

AVAILABLE TO:

KS4 and by  
Invitation

SIGN UP HERE



Start Date:  
Sept

End Date: Feb

Venue:  
Dance Studio

Staff Lead:  
Mr Pickering

WEDNESDAY AND THURSDAY

3.20 UNTIL 4.30PM

DANCE STUDIO

 **ASHLAWN  
ENRICHMENT**  
PROGRAMME  
2022/23

If you play an instrument then what better way to spend your practice time than with other performers. All orchestral instruments welcome as well as guitar, bass and drums.

AVAILABLE TO:

ALL  
YEAR  
GROUPS



Start Date:  
21.09.22

End Date:  
TBC

Venue:  
Music

Staff Lead:  
Miss Bond

 **ASHLAWN  
ENRICHMENT**  
PROGRAMME  
2022/23

# CONCERT BAND

Wednesday After School 3.20-4.30pm

[SIGN UP HERE](#)

# GIRLS TRAINING NIGHT

## NETBALL + FOOTBALL



Thursday After school - 3.20 - 4.40pm

\*\*Netball will be on a rotation due to numbers - KS3 Week 1, KS4 Week 2

AVAILABLE TO:

KS3 - Week 1

KS4 - Week 2



Start Date:  
15th Sept

End Date:  
TBC

Venue:  
Courts & Field

Staff Lead:  
SES/RBR/CST

You will need to bring your full PE Kit and change in the changing rooms. If you are doing football, please bring your football boots and shin pads.  
We look forward to seeing you!

[SIGN UP HERE](#)

# POLITICS AND MODEL

## PARLIAMENT

Thursday After school 3:30-4:30pm

Have you ever wondered why government is the way it is?

Do you think you could create policies that would win a general election?

Do you think you would be a good PM?

Come and join model parliament where we will explore how government works, create our own constitutions and political parties and see who would come out on top!

[SIGN UP HERE](#)

Start Date:  
20th October

End Date:  
16th December

 **ASHLAWN  
ENRICHMENT**

PROGRAMME  
2022/23

Venue:  
PS5

Staff Leads:  
Mr Gardiner &  
Mrs Garrow

AVAILABLE TO:

Years 10,  
11, 12  
and 13



# HANDBALL CLUB

Thursday After School,  
3.30 - 4.30 in the Sportshall

Come along and learn the  
basics to handball

You will need to wear your  
PE kit

AVAILABLE TO:  
Year 7, 8, 9



Start Date:  
22nd Sept

End Date:  
17th Dec

Venue:  
Sportshall

Staff Lead:  
Mr Thomas

[SIGN UP HERE](#)

 **ASHLAWN  
ENRICHMENT**  
PROGRAMME  
2022/23

# CHESS CLUB

After school on a Friday 15:20 - 16:20pm

No need to bring anything along, just come along and have a game of chess.

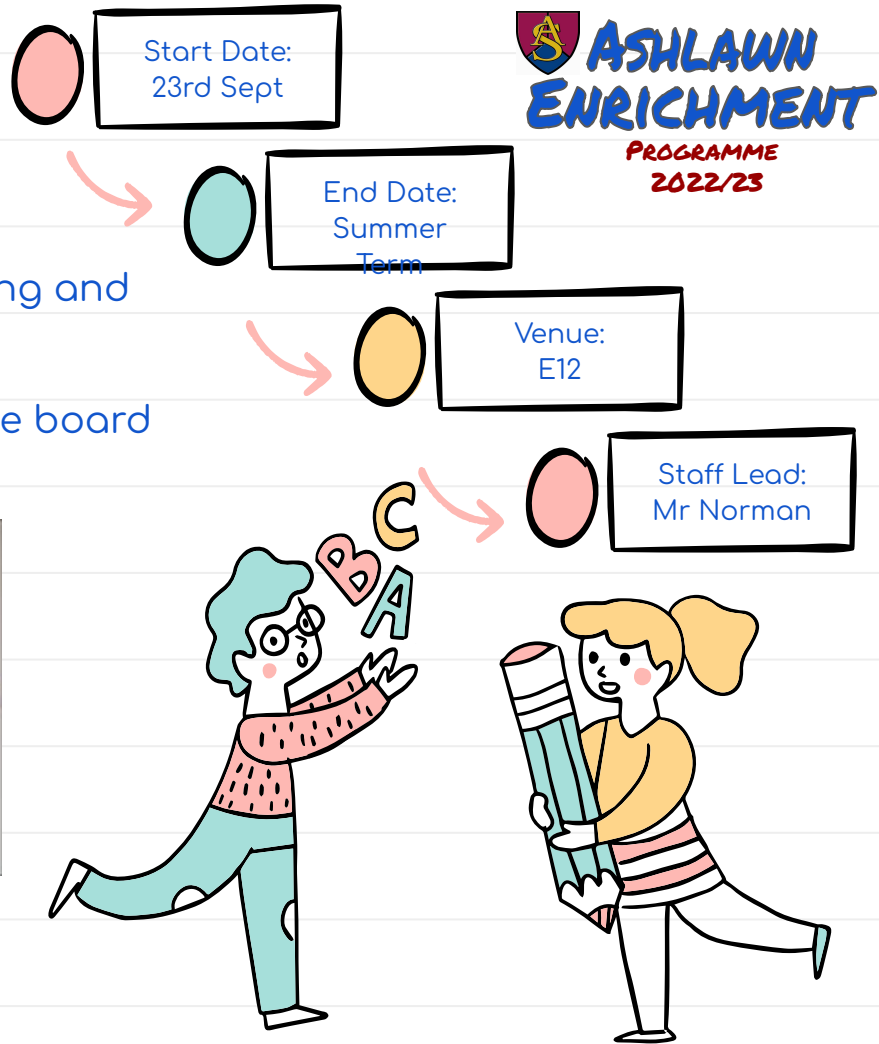
If you are new to chess we will have puzzles on the board to try and solve

AVAILABLE TO:

Open to all year groups and abilities



SIGN UP HERE

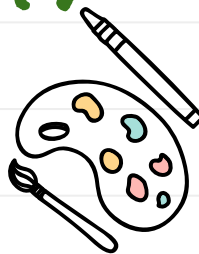




# XMAS CROSS STITCH ENRICHMENT ACTIVITY

Friday 3.30-4.30pm Ar3

Make a small cross stitch of a bauble to add to a xmas card to give to someone special. You will be given the materials



AVAILABLE TO:

Any year group welcome



1st Friday after Oct half term:

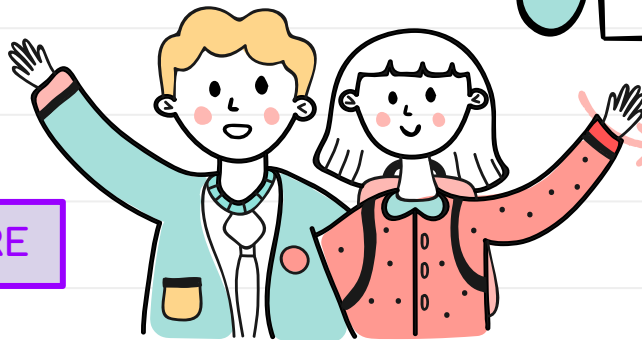
Last day before xmas hols

Ar3:

Staff Lead:  
Ms Seadon

 **ASHLAWN ENRICHMENT PROGRAMME 2022/23**

[SIGN UP HERE](#)





# INTRODUCTION TO IRISH DANCING!



Starts:  
23rd Sept



End:  
18th Nov

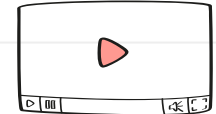
**SIGN UP HERE**



AVAILABLE TO:

ALL YEAR  
GROUPS  
ARE  
WELCOME!

[Irish Dancing Video - Learn your first Irish Dance](#)



 **ASHLAWN  
ENRICHMENT  
PROGRAMME  
2022/23**



Venue:  
DR2



MRS  
BALLINGER

3.20 - 4.20 Fridays after school  
Come and join and have fun!  
(No equipment needed)

# CIRCUIT TRAINING

Friday 3:20 - 4:20 After School

Circuit training is an excellent way to improve fitness and muscular endurance. We will base our sessions around the core muscle groups. If you have a particular focus, please let me know and we can try to incorporate it into the sessions!

AVAILABLE TO:

Key Stage 4  
and Staff

SIGN UP HERE

You will need appropriate sports wear (school P.E Kit is perfect) and a pair of indoor trainers

Space is limited so we are capped at 20 students in the first instance



Start Date:  
4.11.22



End Date  
16.12.22



Venue:  
East Gym



Staff Lead  
Mr Taylor



 **ASHLAWN  
ENRICHMENT**  
PROGRAMME  
2022/23

# GIRLS RUGBY

Starting Friday 30/9/22

You will need to bring P.E kit, rugby boots  
(trainers if you don't have them)



Sports field

(meet in the PE foyer)

3:30-4:30pm

[SIGN UP HERE](#)

AVAILABLE TO:

Year  
7, 8, 9,  
10, 11  
Girls

Start:  
30/9/22

Ends:  
10/12/22

 **ASHLAWN  
ENRICHMENT**

PROGRAMME  
2022/23

Venue:  
Meet at the sports  
hall but will be out  
on the pitches

Staff Lead:  
Mrs Cooke





This club is for those who enjoy jazz music and want to take their playing and improvising to the next step either by taking a solo or playing in the ensemble.

AVAILABLE TO:

ALL  
YEAR  
GROUPS

SIGN UP HERE

Start Date:  
23.09.22

End Date:  
TBC

Venue:  
Music

Staff Lead:  
Mr Walker



# JAZZ BAND

Friday After School 3.20-4.20pm

 **ASHLAWN  
ENRICHMENT  
PROGRAMME  
2022/23**

# CREATIVE WRITING

Lunchtime on Mondays (12:35 - 1:10)



Do you have a story to tell?  
Is there a killer stalking the streets?  
Is there a superhero to save the day?  
Is there a ghost lurking in your classroom?  
Is there an alien fleet on the dark side of the moon?

All you need is a pen and your creativity!

[SIGN UP HERE](#)

 **ASHLAWN  
ENRICHMENT**  
PROGRAMME  
2022/23

Start Date:  
3rd Oct

End Date:  
12th Dec

Venue:  
E13

Staff Lead:  
Mr Greenfield

**AVAILABLE TO:**

All year  
groups

# JAPAN CLUB

Held every Thursday lunchtime.  
Starting 29th September - Room - W4A

Come join in the fun of the latest stuff appearing  
in Japan.

See you there! Mata ne! またね  
Mr Rice

[SIGN UP HERE](#)



Start Date: 29th  
September



End Date: July  
2023



Venue:  
W4A



Staff Lead: Mr  
Rice

