



ASHLAWN SCHOOL

Newsletter Issue Date:
Friday 25 March 2022

Tel: 01788 573425

TL Proud to be part of the
Transforming Lives
EDUCATIONAL TRUST

Email: info@ashlawn.org.uk

Website: www.ashlawn.org.uk

Message from the Principal

We were so pleased that over 80% of parents and carers attended meetings last night with their child's teachers at our online Year 10 Parent Evening. This is a trend that continues across most year groups and we appreciate that our parent community is so supportive of both their children and the school.

Research shows us that when parents are involved in their education, children do better on a wide range of measures. These positive effects include:

- Better behaviour
- More confidence and greater self-esteem
- Higher attendance rates
- A lower risk of exclusion
- More enthusiasm about learning
- Better academic results.

In fact, John Hattie's 2008 study, *Visible Learning: A Synthesis of Over 800 Meta-Analyses Relating to Achievement* found that **"the effect of parental engagement over a student's school career is equivalent to adding two or three years to that student's education"**.

Following the recent parent survey, we have released more appointments to try to enable parents to make more appointments and we hope that you have noticed the difference.

Siobhan Evans



Congratulations to this week's top scoring pupils from each college!

	Webb Ellis	Evans	Brooke	Ruddock	Livermore
Year 7	Jack W	Cadence R	Benjamin S	Liam C	Benjamin A
Year 8	Mason M	Sophie F	Manny P	Satvik S	Daniel R
Year 9	Imogen E	Holly L	Leo B	Grace N	Inari L
Year 10	Malena W	Finley R	Ryan B	Bethany S	Danesh C
Year 11	Amelia C	Alexander B	Mateusz K	Cobie T	Hannah M
Year 12	Freddie P	Maisie H	Alvin A	Kacper L	Joel R
Year 13	Jaimie W	Esha T	Kian A	Emilia D	Midas K



ASHLAWN SCHOOL

Newsletter Issue Date:
Friday 25 March 2022

Tel: 01788 573425

TL Proud to be part of the
Transforming Lives
EDUCATIONAL TRUST

Email: info@ashlawn.org.uk

Website: www.ashlawn.org.uk

Treating Headlice

We have had several reports of students with head lice. Please be vigilant in checking your child's hair to prevent any spreading

Symptoms of head lice include:

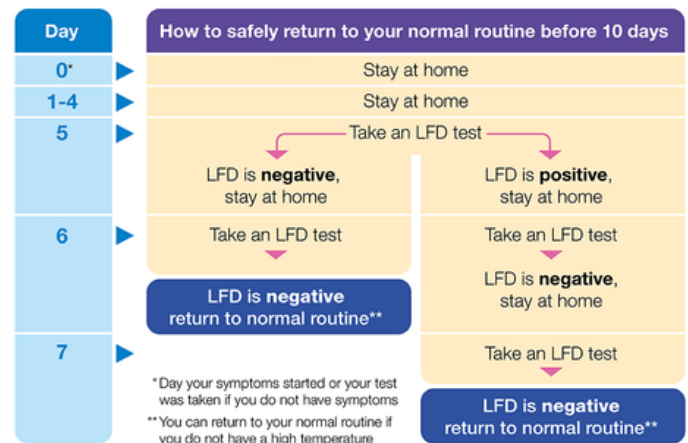
- Small white eggs or nits (egg cases) in the hair behind the ears or at back of the neck
- An itchy scalp
- Like something is moving in your hair
- A rash on the back of the neck

You can get rid of head lice by:

- Combing their hair with a special fine-toothed comb (detection comb). You can buy these online or at pharmacies.
- Using medicated lotions and sprays. These kill head lice in all types of hair, and you can buy them from pharmacies, supermarkets or online.

Government Covid Guidance

Children and young people with COVID-19 should not attend their educational setting while they are infectious. They should take an LFD test from 5 days after their symptoms started (or the day their test was taken if they did not have symptoms) followed by another one the next day. If both these tests are negative, they should return to their educational setting if they normally attend one, as long as they feel well enough to do so and do not have a temperature. They should follow the guidance for their educational setting. Please ensure that if your child has tested positive for Covid-19 they **MUST** stay at home until they have two negative tests detailed in the government guidance below.



If your day 5 LFD test result is positive, you can continue taking LFD tests until you receive 2 consecutive negative test results.

Gardening Club

Your opportunity to flourish!

What?

- Growing of fruit, vegetables and flowers
- Garden maintenance
- Learn about sustainable gardening
- Pond development and maintenance
- Looking after wildlife

When?

Monday – early lunch (years 7, 9, 11, 13)
Thursday – after school (all year groups)
Friday late lunch (years 8, 10 and 12)

Miss E Woodhouse
woodhousee@ashlawn.org.uk



All gardening tools and resources will be provided



Gardening is great for mindfulness and can have benefits for mental health



Edibles and flowers can be taken home!

CHILDREN & FAMILY SUPPORT SERVICE

Holiday Activities and Food (HAF) Programme

Please use the link below to access HAF Easter activities available for families in and around Warwickshire.

<https://www.warwickshire.gov.uk/directory/46/haf-easter-activities>

World Autism Acceptance Week

28 March - 3 April 2022

Thinking about our students and colleagues with autism...you are all fabulous!

Useful websites

- <https://thegirlwiththecurlyhair.co.uk/>
- <https://www.autism.org.uk/>
- <https://rugbyautismnetwork.co.uk/>
- <https://actforautism.co.uk/>



ASHLAWN SCHOOL

Newsletter Issue Date:
Friday 25 March 2022

Tel: 01788 573425

TL Proud to be part of the
Transforming Lives
EDUCATIONAL TRUST

Email: info@ashlawn.org.uk

Website: www.ashlawn.org.uk

Sporting News

So good to see so many Year 8 boys turn out to represent the rugby team tonight with everyone playing at least half a game vs Lawrence Sheriff School.
Ash 3 v 9 LSS

NEXT WEEK'S FIXTURES

Tuesday 29 March

U13 Girls Football v Rugby High School (away)

To keep up-to-date with all Ashlawn sporting achievements, experiences and extra-curricular activities please be sure to follow the Ashlawn PE department's Twitter and Instagram page.



@AshPEDept



@AshPEDept

Year 11 Rugby Team

ASHLAWN v PRINCETHORPE COLLEGE



Congratulations to the Year 11 rugby team in probably their last match for Ashlawn. A great way to end the journey with a 24 v 49 victory at Princethorpe College.

25TH MARCH 22

SUBJECT CHALLENGE OF THE WEEK

PICTURES OF YOU AS YOUR
FAVORITE SUPERHERO

UPLOAD ENTRIES TO THE ASSIGNMENT ON
YOUR COLLEGE GOOGLE CLASSROOM



2 ACHIEVEMENT POINTS PER
ENTRY. WINNERS WILL RECEIVE
5 ACHIEVEMENT POINTS



ASHLAWN SCHOOL

Newsletter Issue Date:
Friday 25 March 2022

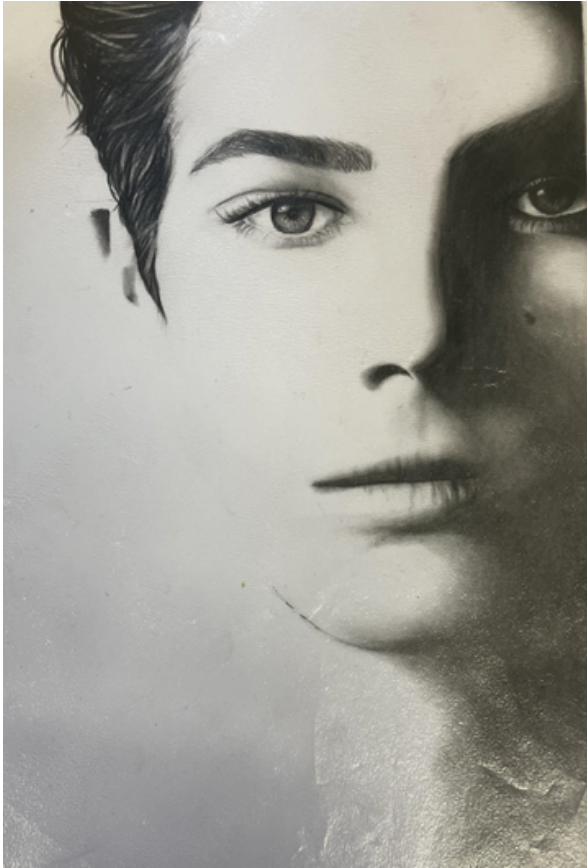
Tel: 01788 573425

TL Proud to be part of the
Transforming Lives
EDUCATIONAL TRUST

Email: info@ashlawn.org.uk

Website: www.ashlawn.org.uk

By Amber Year 13



ART *Of the week*



By Emily Year 13



By Kevin Year 7



By Imogen Year 13



By Stella Year 9



ASHLAWN SCHOOL

Newsletter Issue Date:
Friday 25 March 2022

Tel: 01788 573425

TL Proud to be part of the
Transforming Lives
EDUCATIONAL TRUST

Email: info@ashlawn.org.uk

Website: www.ashlawn.org.uk

Tycoon Enterprise Competition

Please see the surrounding posters if you would like to support our teams that have been participating in the Tycoon Enterprise competition which is a part of The Peter Jones Foundation. We have two teams that are selling: sweets, T-shirts and celebration hampers. They have two more weeks of trading and they welcome further orders.

Sufficiently Sweet

We give you delicious memories.



Small-£1.10-100g
Medium-£2.25-250g
Large-£3.75-400g

If you have any dietary needs or have any urgent questions to ask, please contact one of the following.

- CEO-Donnie Ohandjanian- y19ohandjaniand@ashlawn.org.uk

- Head of marketing- Alex Slater- y19slatera@ashlawn.org.uk

Scan the Barcode to order a sweet bag online. You can also buy in person at the collections points below AFTER SCHOOL ONLY



Collection Points are:

- Just outside W10 - We will be here for 15 minutes after school
- Outside Y10 gate after school on Tuesday and Friday.

Was £24.95

£19.95

Scan this to design a
printed shirt
here



D2-shirts

<http://d2-shirt.co.uk/>



Please note: this is a work in progress and will only be sold to people in school

ON SALE NOW



Price -
£10 for the self care box

What's in it -

- face mask
- bath bomb
- heart tealights x3
- bath salts
- hand cream
- body lotion
- soap
- reusable makeup pads x2
- micellar water

How to buy it -

- Find Alice, Ameerah or Zoe
- Message us on Insta @evergreen.occasion
- Find us in WIA after school on Tuesdays

MENU w/c Monday 28 March 2022

MON	TUE	WED	THU	FRI
HMD Meatballs and Spaghetti	HMD Hunters Chicken and Rice	HMD Chicken Curry & Rice	HMD Sweet & Sour Chicken Balls Rice	HMD Fish Chips Mushy Peas
HMD Vegetarian Meatballs and Spaghetti	HMD BBQ Quorn and Rice	HMD Quorn Curry & Rice	HMD Quorn Sweet & Sour	HMD Cheese & Onion Pasty
Jacket Potato Tuna	Hot Pasta King Meat	Jacket Potato Cheese	Hot Pasta King Meat	Jacket Potato Beans
Hot Chicken Fillets	Hot Pasta King Veg	Hot Cheese & Tomato Bagel	Hot Pasta King Veg	Hot Rollover Hotdog
CMD Chicken & Stuffing	Hot Sausage Roll	CMD Chicken Bacon Mayo	Hot Chicken Burger	CMD Hot & Spicy Chicken Mayo
CMD Ploughmans	CMD Ham Salad	CMD Egg & Cress	CMD BLT	CMD Cheese & Pickle
	CMD Tuna & Cucumber		CMD Cheese Salad	



ASHLAWN SCHOOL

Newsletter Issue Date:
Friday 25 March 2022

Tel: 01788 573425

TL Proud to be part of the
Transforming Lives
EDUCATIONAL TRUST

Email: info@ashlawn.org.uk

Website: www.ashlawn.org.uk

Safeguarding Advice

What to do if you are worried about your, or someone else's safety.

Tell a trusted adult at school.

We are here to help, and our team of Designated Safeguarding Leads will provide support. You can also call on the following number: 01788 573425.

If you are in immediate danger then phone 101 or 999.

Here are some other ways things you can get the help you need:

- Tell a trustworthy family member or safe adult who may be able to help you
- Call Childline on 0800 1111 and talk through how you are feeling and your concerns
- Email the Designated Safeguarding Leads at school at safeguarding@ashlawn.org.uk
- Speak to Young Carers if you are looking after someone at home. Tel: 02476 217740
- Look online for support from the Family Information Service at www.warwickshire.gov.uk/childrenandfamilies
- If you feel unsafe or in danger call the council helpline on 01926 414144

If you are struggling with your mental health and want some reassurance and advice, then contact your form tutor or Head of Year. They would love to hear from you and they will help alleviate your worries.

Mrs Pountney

Assistant Principal and Designated Safeguarding Lead

**Safeguarding is
Everyone's
Responsibility**

The Family Information Service can provide a wide range of information/support/ referrals for families in Warwickshire either via our helpline or on a face to face basis.

FIS Brokerage Service is a 1:1 early intervention service which can be used to support families with children age 0 to 25 living in Warwickshire to access services where there are barriers and/or complex needs.

To access this service please contact them using the methods below:

fis@warwickshire.gov.uk

- [Twitter – @WarksFIS](https://twitter.com/WarksFIS)
- [Facebook – Warwickshire Family Information Service](https://www.facebook.com/WarwickshireFamilyInformationService)
- <https://www.warwickshire.gov.uk/children-families>

01926 742 274.

The Family Intervention Service can help you with topics such as:

- family relationships
- finance
- housing
- parenting support
- special educational needs and disabilities (SEND)
- childcare
- health and wellbeing

Please don't hesitate to get in touch. They are there to help!

Mrs Pountney

Assistant Principal



Free Sanitary Items

Students can collect free sanitary wear at school. They are available from Reception, Student Services and the PE changing rooms. Tampons and sanitary towels are available.

Mrs Pountney

Assistant Principal

Food Bank

If you are struggling financially and would like a food parcel or food bank voucher, please contact Mrs Pountney or Mrs Lavery as we have a few food parcels left and we are happy to deliver.

