



TL Proud to be part of the
Transforming Lives Educational Trust

ASHLAWN SCHOOL

Newsletter Issue Date:
Friday 11 February 2022

Principal:
Mrs S Evans

Tel: 01788 573425

Email: info@ashlawn.org.uk

Website: www.ashlawn.org.uk

Message from the Principal

This week we have enjoyed the talents of our wonderful students in Joseph and the Amazing Technicolour Dreamcoat. The incredible performances enjoyed by students, both in school and across our local community, as well as audiences made of family, friends and theatre lovers, have received rave reviews. We are so very proud of the resilience that our students and staff have shown to prepare such an incredible show.

This week, exam boards have released information about what students at GCSE and A Level will be examined on at the end of the year. While we are still required to have contingency plans for Teacher Assessed Grades should exams not go ahead for any reason, we are feeling more confident that exams will return as normal for this cohort. Dr Jo Saxton, Chief Regulator at OfQual has written a letter to students. We will share the letter with students through Google Classroom, but have included it for parents and carers as well.

Siobhan Evans

Dear students,

In my job as Chief Regulator of qualifications I get to meet many students, teachers and parents from different parts of the country. Speaking to students like you, who are getting ready for formal exams and assessments, it's clear to me that you want life to get back to normal and that you would like as much certainty about what is going to happen as possible.

For that reason the exam boards have, this week, published for you 'advance information' on their websites. This is subject by subject, specification by specification, specific outlines of the focus of questions across many of your summer exams. [We've added a tool on our website which shows you what is available for each subject.](#)

These materials are just one of the ways we are working to make sure that, despite the disruption caused by the coronavirus (COVID-19) pandemic, your exams and formal assessments are less daunting.

You will also get formulae sheets for GCSE maths exams and updated equation sheets for GCSE physics and combined science exams, so you won't have to memorise as much.

As well as advance information and formulae sheets, you will be supported by generous grading, which will provide you with a safety-net to protect you from just missing out on a grade.






We will also publish videos, infographics and other materials to help those of you who have been prevented from ever sitting a formal exam, to know what that feels like.

You can find more information at the following official sources:

- Rolling update
- [Ofqual Instagram](#)
- [Ofqual blog](#)

Best wishes,

Dr Jo Saxton Ofqual Chief Regulator

	Webb Ellis	Evans	Brooke	Ruddock	Livermore	
Year 7	Harmony S	Joseph P Freddie W	Isabella H	Andrei D	Sienna B Kevin J	 2896
Year 8	Harry D	Seren C	Lennon M	James F	Lian S	
Year 9	Phoebe B	Aryan M	Sebastian D	Ahmed Z	Maia L	 2650
Year 10	Kaitlin P	Joshua B	Jacob A Oliver S	Denis I	Ben M	 2650
Year 11	Daniel T	Emily O	Morganna L	Gabriel H	Max B	
Year 12	Grace H	Martyna C	Ben B	Imsha T	Joel R	 2556
Year 13	Harrison P	Jeevan B	Luke R	Daisy P	Haadia M	 2543



ASHLAWN SCHOOL

TL Proud to be part of the
Transforming Lives Educational Trust

Newsletter Issue Date:
Friday 11 February 2022

Principal:
Mrs S Evans

Tel: 01788 573425

Email: info@ashlawn.org.uk

Website: www.ashlawn.org.uk

10TH FEB 22

SILLY CHALLENGE OF THE WEEK

BEST DRESSED PET



2 ACHIEVEMENT POINTS PER
ENTRY. WINNERS WILL
RECEIVE 5 ACHIEVEMENT
POINTS

UPLOAD ENTRIES TO THE ASSIGNMENT ON
YOUR COLLEGE GOOGLE CLASSROOM

Competition Spotlight

Here is one of the many college competitions for this spring term. You will find all the details on your college google classrooms.

English's College Competition - "calling all poets!"

Memorise a poem of your choice and **perform a dramatic reading of it** (à la actors on YouTube...)

- Ninety seconds or so long, no longer
- The play *doesn't* have to be studied at school, provided it is school-appropriate
- You could even choose to write your own poem about something dear to you and perform this!





ASHLAWN SCHOOL

TL Proud to be part of the
Transforming Lives Educational Trust

Newsletter Issue Date:
Friday 11 February 2022

Principal:
Mrs S Evans

Tel: 01788 573425

Email: info@ashlawn.org.uk

Website: www.ashlawn.org.uk

Sporting Achievements



Year 7 Netball Match Report

By Amelia Joyce (Year 7)

On Wednesday 9 February the Year 7 Netball girls competed in a match against Rugby Free School. The interceptions were amazing and the passing was on point. This time our opponents were always one step ahead of us and unfortunately we were unable to score any goals but we showed them we know how to work as a team.

The final score of the match was 4- 0 to Rugby Free School.

Team: Amelia J, Cadence, Daisy C-C, Esme R, Liana I, Nelly G, Orin M, Sophia P.

We are delighted to announce that **Ava Rogerson** (Year 10) and **Thomas Brinkley** (Year 11) have been selected to represent Warwickshire at the 'English Schools Cross Country Championships' at Hop Farm, Paddock Wood, Kent on Saturday March 19 2022. Congratulations to both students and we wish them Good Luck!



JOSEPH AND THE AMAZING TECHNICOLOR DREAMCOAT

LYRICS BY TIM RICE
MUSIC BY ANDREW LLOYD WEBBER



MRS PICKERING

"What an amazing cast.

These young performers are so professional, slick and breath-taking to watch.

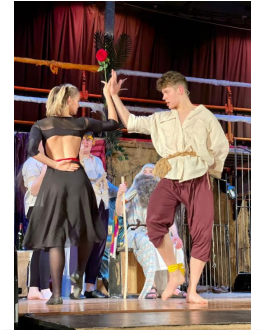
A huge congratulations to all of you.

I wish you all the very best for the next stage in your theatrical and personal lives - and demand that you get me a free ticket to your WestEnd and Broadway shows!"



PADDOX PRIMARY

"Our children really enjoyed the experience and haven't stopped talking about it since! A huge thank you to both you and to the cast/technicians for all your dedication in delivering a show to remember. Their performances really inspired our Year 6 classes in preparation for their end of summer performance."





TL Proud to be part of the
Transforming Lives Educational Trust

ASHLAWN SCHOOL

Newsletter Issue Date:
Friday 11 February 2022

Principal:
Mrs S Evans

Tel: 01788 573425

Email: info@ashlawn.org.uk

Website: www.ashlawn.org.uk

Public Examinations – Summer 2022

An email with a link to a google form has been sent to all students sitting public examinations in the summer and their parents.

The google form needs to be completed to confirm that the student has checked their details and agrees that their entries are correct.

The Statements of Entry can be found on the reports section of Edulink.

The deadline for completing is Monday 14th February.



Click [HERE](#) to read Warwickshire County Council's February 2022 edition of Warwickshire SEND. This newsletter brings you news and information on special educational needs and disability in Warwickshire.



Uniform

A reminder that black leggings and black jeans are not permitted school uniform. Students must wear either a black pleated regulation skirt with black or dark grey socks/ black or beige tights or black regulation trousers. For more details please click the link [HERE](#) to see our uniform expectations.

Science Club

Science Club this coming Monday (14th Feb) is cancelled. We will be back after half term on Monday 28th Feb

Thank you, Miss Lodge and Mrs Johnson-Slaney



ASHLAWN SCHOOL LUNCH MENU

MON	TUE	WED	THU	FRI
HMD Macaroni Cheese with Bacon and Garlic Bread	HMD Chicken Chow Mein	HMD Roast Chicken, Vegetables, Potatoes & Stuffing	HMD Sweet & Sour Chicken Bites and Rice	HMD Fish, Chips & Mushy Peas
HMD Macaroni Cheese and Garlic Bread	HMD Quorn Chow Mein	HMD Quorn Roast, Vegetables, Potatoes and Stuffing	HMD Quorn Sweet & Sour with Rice	HMD Moving Mountain (Vegetarian) Burger and Chips
Jacket Potato & Tuna	Hot Pasta King (Meat)	Jacket Potato & Cheese	Hot Pasta King (Meat)	Jacket Potato & Beans
Hot Chicken Fillets	Hot Pasta King (Veg)	Hot Cheese & Tomato Bagel	Hot Pasta King (Veg)	CMD Sausage Roll
CMD Ham Salad	Hot Chicken Curry Wrap	CMD Hot n Spicy Chicken with Mango	Hot Cheese & Pepperoni Toastie	CMD Cheese & Ham
CMD Cheese & Pickle	CMD Coronation Chicken CMD Egg & Cress		CMD BLT	



ASHLAWN SCHOOL

Newsletter Issue Date:
Friday 11 February 2022

Principal:
Mrs S Evans

Tel: 01788 573425

TL Proud to be part of the
Transforming Lives Educational Trust

Email: info@ashlawn.org.uk

Website: www.ashlawn.org.uk

By Grace Year 8



ART

Of The Week



By Meghan Year 12



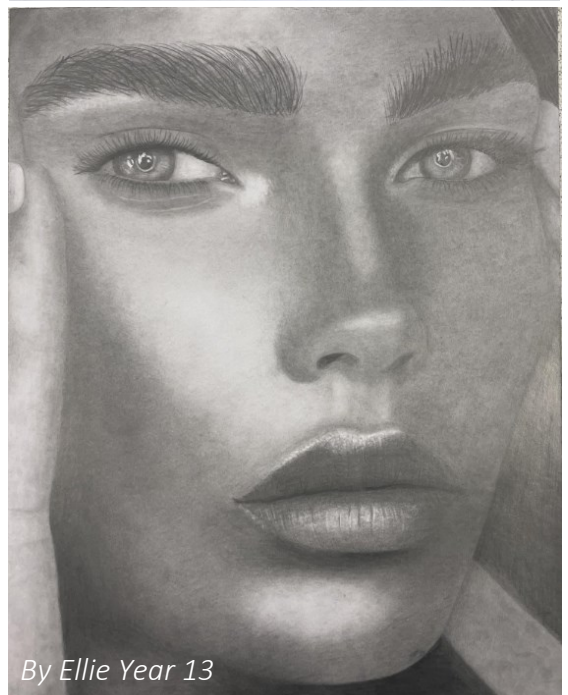
By Elizabeth Year 12



By Sania Year 12



By Saffron Year 10



By Ellie Year 13



By Matthew
Year 12



By Dharma Year 10



ASHLAWN SCHOOL

TL Proud to be part of the
Transforming Lives Educational Trust

Newsletter Issue Date:
Friday 11 February 2022

Principal:
Mrs S Evans

Tel: 01788 573425

Email: info@ashlawn.org.uk

Website: www.ashlawn.org.uk

What is LOVE?

This week we will be delivering assemblies about the word **LOVE**. What is it? What does it mean?

Students will learn about the different relationships we may have in our lifetime and how we use the word **LOVE** in our everyday language.

We want to explore what a healthy relationship looks like and we will be discussing the following questions with our students:

Questions to Ask Yourself.....

1. Do you have trust in one another?

2. Do you respect each other?

3. Do you support each other's interests and efforts?

4. Are you honest and open with each other?

5. Are you able to maintain your individual identity?

6. Do you talk about your feelings, hopes, fears, and dreams?

7. Do you feel and express fondness and affection?

8. Is there equality and fairness in your relationship?

Tips for Maintaining a Healthy Relationship



Every person's needs are different. For example, some people have higher needs for openness and affection than others do. In a healthy relationship, each person is able to get what they need. If your child wants to talk to a trusted adult in school about an unhealthy relationship then please encourage them to do so.



University of Warwick - Year 12 Easter residential for autistic young people

The University of Warwick is hosting an Easter residential event for autistic young people. This event will take place from 20th to 22nd April 2022. The participants will stay at the university over the three days (two nights) and take part in academic taster sessions, social activity, shopping, cooking and support choosing a university/degree.



The young people can apply if they are:

- Autistic (whether formally diagnosed or not)
- Interested in attending university after they finish post-16 education
- In Year 12 and attend a school, college or sixth form
- Studying Level Three qualifications (A Levels, BTEC's or equivalent)

Students can apply by following this link: https://warwick.co1.qualtrics.com/jfe/form/SV_09xJwPeRAjUGx14



Any questions, let us know. Please note that we anticipate being able to accommodate thirty young people, and may receive more applications than places. We will be in contact with successful applicants in March.





TL Proud to be part of the
Transforming Lives Educational Trust

ASHLAWN SCHOOL

Newsletter Issue Date:
Friday 11 February 2022

Principal:
Mrs S Evans

Tel: 01788 573425

Email: info@ashlawn.org.uk

Website: www.ashlawn.org.uk

Year 11 Information

Revision Tip of the Week:

Students will have worked with Elevate education on techniques for improving memory. These can include visual triggers, Mnemonics and rhyme alongside the more traditional methods of recital and rote learning.

MNEMONICS

Mnemonics involves translating information into an alternative form that is easy to learn.

One way is by taking the first letters of a string or information and translating into a memorable phrase e.g Never Eat Shredded Wheat for North, East, South, West

Examples in GCSE subjects:

Science: OIL RiG...oxidation is a loss in electrons and reduction is a gain in electrons

Geography: TEA - trend, evidence, anomaly as a skill to help interpret data

GCSE PE: RICE - rest, ice, compress, elevate

Year 11 Challenge: Can you use mnemonics this week to help you revise?

Dates for Your Diary

Term dates for this year can be found on the link below.

Half Term **Monday 21 Feb – Friday 25 Feb**

Covid Vaccinations **March 7 & 8**



[Term Dates](#)



Students should be using GCSE pod to support their revision. Once they have logged in they can access a variety of video pods for all of their subjects and then complete questions to check understanding and memory. Some teachers are setting pods as part of homework activities and the access to practice exam questions is really valuable.

This weeks top GCSE Pod users are:

★ **Holly Lightfoot**

★ **Emily Beaton**

Access GCSEpod [HERE](#)

Careers

This week has been National Careers Week and students have been provided with information on how to apply for an apprenticeship. Further information can be found here:

<https://www.gov.uk/apply-apprenticeship>

Students should have already applied for their place in either 6th form or college next year. However, we are still offering careers appointments in school. If you have not yet applied and would like a careers appointment please email Mrs Martin at martina@ashlawn.org.uk

Rugby Out-of-School Clinic

There will be an additional pop-up Covid-19 vaccination clinic held at the St. Cross Hospital in Rugby on Tuesday 22nd February.

The link by which parents can book in is [here](#).

If your child has tested positive within the last 12 weeks, they would however not be eligible under the current National guidance.



TL Proud to be part of the
Transforming Lives Educational Trust

ASHLAWN SCHOOL

Newsletter Issue Date:
Friday 11 February 2022

Principal:
Mrs S Evans

Tel: 01788 573425

Email: info@ashlawn.org.uk

Website: www.ashlawn.org.uk

Safeguarding Advice

What to do if you are worried about your, or someone else's safety.

Tell a trusted adult at school.

We are here to help, and our team of Designated Safeguarding Leads will provide support.

You can also call on the following number: 01788 573425.

If you are in immediate danger then phone 101 or 999.

Here are some other ways things you can get the help you need:

- Tell a trustworthy family member or safe adult who may be able to help you
- Call Childline on 0800 1111 and talk through how you are feeling and your concerns
- Email the Designated Safeguarding Leads at school at safeguarding@ashlawn.org.uk
- Speak to Young Carers if you are looking after someone at home. Tel: 02476 217740
- Look online for support from the Family Information Service at www.warwickshire.gov.uk/childrenandfamilies
- If you feel unsafe or in danger call the council helpline on 01926 414144

If you are struggling with your mental health and want some reassurance and advice, then contact your form tutor or Head of Year. They would love to hear from you and they will help alleviate your worries.

Mrs Pountney

Assistant Principal and Designated Safeguarding Lead

**Safeguarding is
Everyone's
Responsibility**

The Family Information Service can provide a wide range of information/support/ referrals for families in Warwickshire either via our helpline or on a face to face basis.

FIS Brokerage Service is a 1:1 early intervention service which can be used to support families with children age 0 to 25 living in Warwickshire to access services where there are barriers and/or complex needs.

To access this service please contact them using the methods below:

fis@warwickshire.gov.uk

- [Twitter – @WarksFIS](https://twitter.com/WarksFIS)
- [Facebook – Warwickshire Family Information Service](https://www.facebook.com/WarwickshireFamilyInformationService)
- <https://www.warwickshire.gov.uk/children-families>

01926 742 274.

The Family Intervention Service can help you with topics such as:

- family relationships
- finance
- housing
- parenting support
- special educational needs and disabilities (SEND)
- childcare
- health and wellbeing

Please don't hesitate to get in touch. They are there to help!

Mrs Pountney

Assistant Principal



Free Sanitary Items

Students can collect free sanitary wear at school. They are available from Reception, Student Services and the PE changing rooms. Tampons and sanitary towels are available.

Mrs Pountney

Assistant Principal

Food Bank

If you are struggling financially and would like a food parcel or food bank voucher, please contact Mrs Pountney or Mrs Lavery as we have a few food parcels left and we are happy to deliver.

