



# ASHLAWN SCHOOL

Newsletter Issue Date:  
Friday 18 November 2022

Tel: 01788 573425



Email: [info@ashlawn.org.uk](mailto:info@ashlawn.org.uk)

Website: [www.ashlawn.org.uk](http://www.ashlawn.org.uk)

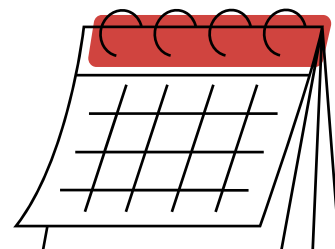
As November becomes an increasingly cold month leading into the start of the festive season, we have seen some fantastic successes for our students.

We have awarded our first silver award badge this week to Harry in Year 9, achieving 341 points. These new rewards form part of our CARE values and excellence is evident here!

Year 11 have started their mock exams this week and have approached this with great maturity and clear determination to try their absolute best. Mock exams for Year 11 will continue into next week and we wish all students the best of luck. If you want to support your child, make sure they get lots of rest, make sure they're fed and test them on key aspects of their learning.

Next week we have our Sixth Form Open Evening where we invite Year 11 to consider their next steps in their Ashlawn journey; they can discuss their career aspirations and subject selection with our teachers. Year 13 are also in the process of considering future aspirations, with UCAS and apprenticeship applications coming in thick and fast.

Today, as a community, we have welcomed students into school in non uniform to support Children in Need. Thank you for your donations.



## Dates for the Diary

### Thursday 24 November

Sixth Form Prospective Parents Evening

### Friday 25 November

Teacher Training Day (School closed)

### Monday 28 November

Year 7 Parents Open Evening

### Wednesday 30 November

Trip to SIX! The Musical

### Thursday 8 December

Year 11 Parent Consultations

## Year 11 Mock Exam Timetable

**WINNER**



**EVANS COLLEGE**  
2789

**BROOKE COLLEGE**  
2756

**LIVERMORE COLLEGE**  
2692

**WEBB ELLIS COLLEGE**  
2661

**RUDDOCK COLLEGE**  
2652

MONDAY 21ST NOVEMBER		
9.00 am	10.45 am	French Listening and Reading
1.15 pm	2.15 pm	Engineering
1.15 pm	3.00 pm	Food
1.15 pm	2.45 pm	Psychology 2
TUESDAY 22ND NOVEMBER		
9.00 am	9.55 am	History 2
9.00 am	10.00 am	Geography 2
11.30 am	12.25 pm	History Clashes
1.15 pm	2.15 pm	English Literature
WEDNESDAY 23RD NOVEMBER		
9.00 am	10.20 am	MFL Writing
1.15 pm	2.45 pm	Business 1
1.15 pm	2.30 pm	Music
1.15 pm	2.30 pm	Child Development
1.15 pm	2.35 pm	French/German Clashes
THURSDAY 24TH NOVEMBER		
9.00 am	10.45 am	Spanish Listening and Reading
9.00 am	11.00 am	Design Technology
1.15 pm	2.30 pm	P E 2
1.15 pm	2.45 pm	Computing 2



# ASHLAWN SCHOOL

Newsletter Issue Date:  
Friday 18 November 2022

Tel: 01788 573425

**TL** Proud to be part of the  
Transforming Lives  
EDUCATIONAL TRUST

Email: [info@ashlawn.org.uk](mailto:info@ashlawn.org.uk)

Website: [www.ashlawn.org.uk](http://www.ashlawn.org.uk)

## Ashlawn Sixth Form Open Evening, Thursday 24 November 2022

**ASHLAWN  
SCHOOL SIXTH  
FORM  
OPEN  
EVENING**

**Thursday 24th November  
5:30pm - 8:00pm**

Join us to speak with subject leaders and students about our range of courses. The Principal's presentations will take place at 5:45pm, 6:30pm and 7:15pm.

Please see our website for details and to book your preferred slot.  
[www.ashlawn.org.uk](http://www.ashlawn.org.uk)

**SCAN  
HERE TO  
BOOK  
YOUR  
PLACE**

Proud to be part of the  
Transforming Lives  
EDUCATIONAL TRUST

Join us to speak with subject leaders and students about our range of Sixth Form courses. The Principal's presentations will take place at 5:45pm, 6:30pm and 7:15pm. Book your preferred slot here: <https://bit.ly/3TqzYEW>

### Maths/Logic Puzzle – Test your Knowledge!



Gareth Southgate's Unusually Weighted Footballs

Gareth has set his England team a mathematical challenge. He has given unusually weighted footballs to 4 of his squad members: captain Harry Kane, goalkeeper Jordan Pickford, and Fortnite computer game dance maestros Jesse Lingard and Dele Alli.

Gareth has asked the players to work out the weight of each of the 4 footballs and has given them 4 clues:

1. The mean or average weight of these footballs is 80 grams.
2. The 3 heavier footballs weigh 270 grams in total.
3. The heaviest football, given to Harry Kane, is 3 times the weight of the lightest football, given to Jesse Lingard.
4. The 2 middle footballs weigh exactly the same.

**Question:** What is the weight of each of the footballs?

Email [normanr@ashlawn.org.uk](mailto:normanr@ashlawn.org.uk) with your answers.

The first 5 students to answer correctly will get a shout-out in next week's newsletter!



*Well done Sam in Year 8 who has achieved his Black Belt in Tae Kwon Do. This is a fabulous achievement Sam - Well Done!*





# ASHLAWN SCHOOL

Newsletter Issue Date:  
Friday 18 November 2022

Tel: 01788 573425

**TL** Proud to be part of the  
Transforming Lives  
EDUCATIONAL TRUST

Email: [info@ashlawn.org.uk](mailto:info@ashlawn.org.uk)

Website: [www.ashlawn.org.uk](http://www.ashlawn.org.uk)

## POEM OF THE WEEK

### Aspiration

We never know how high we are  
Till we are called to rise;  
And then, if we are true to plan,  
Our statures touch the skies.

The heroism we recite  
Would be a daily thing,  
Did not ourselves the cubits warp  
For fear to be a king.

**Emily Elizabeth Dickinson**



## MEDIA TRIP

On the 18th of November we took a group of our Year 12 and 13 Media Studies to the Pinewood Studios Futures Festival. This is the biggest Media careers event for those looking to start their journey in the Film & TV industry, with over 2000 students attending from around the country. It was a brilliant opportunity for students to not only learn about the Media industry by attending workshops and talks, but also consider their next steps and meet industry experts. Whilst we were there we attended a talk with the critically acclaimed BBC 1's film critic Ali Plum!



# ASHLAWN SCHOOL

Newsletter Issue Date:  
Friday 18 November 2022

Tel: 01788 573425

**TL** Proud to be part of the  
Transforming Lives  
EDUCATIONAL TRUST

Email: [info@ashlawn.org.uk](mailto:info@ashlawn.org.uk)

Website: [www.ashlawn.org.uk](http://www.ashlawn.org.uk)

## MRS MILLS' BOOK OF THE WEEK

Mrs Mills, our School Librarian, highly recommends the following books.

**Key Stage 3**  
**Year 7 - 9**



### **FAKE** by Ele Fountain

Imagine a world where your only friends are virtual, and big tech companies control access to food, healthcare and leisure. This is Jess's world. But when she turns fourteen, Jess can go to school with other children for the first time. Most of them hate the 'real' world, but Jess begins to question whether the digital world is 'perfect' after all.

Back home, her sister Chloe's life-saving medication is getting ever more expensive. Determined to help, Jess risks everything by using skills forbidden in the cyber-world, only to stumble on something explosive. Something that will turn her whole world upside down.

It's up to Jess to figure out exactly what is real, and what is fake – Chloe's survival depends on it.

Genre – Dystopian

Recommended Age – 11+

**Key Stage 4**  
**Year 10 - 11**



### **THE QUIET AT THE END OF THE ROAD** by Lauren James

Lowrie and Shen are the youngest people on the planet after a virus caused global infertility. Closeted in a pocket of London and doted upon by a small, ageing community, the pair spend their day's mud-larking for artefacts from history and looking for treasure in their once-opulent mansion.

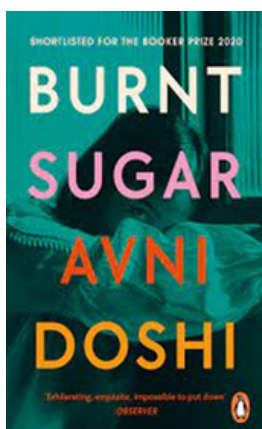
Their idyllic life is torn apart when a secret is uncovered that threatens not only their family but humanity's entire existence. Lowrie and Shen face an impossible choice: in the quiet at the end of the world, they must decide who to save and who to sacrifice . . .

It's up to Jess to figure out exactly what is real, and what is fake – Chloe's survival depends on it.

Genre – Dystopian

Recommended Age – 14+

**Key Stage 5**  
**Year 12- 13**



### **BURNT SUGAR** by Avni Doshi

In her youth, Tara was wild. She abandoned her loveless marriage to join an ashram, endured a brief stint as a beggar (mostly to spite her affluent parents), and spent years chasing after a dishevelled, homeless 'artist' – all with her young child in tow. Now she is forgetting things, mixing up her maid's wages and leaving the gas on all night, and her grown-up daughter is faced with the task of caring for a woman who never cared for her.

This is a love story and a story about betrayal. But not between lovers – between mother and daughter. Sharp as a blade and laced with caustic wit, *Burnt Sugar* unpicks the slippery, choking cord of memory and myth that binds two women together, making and unmaking them endlessly

Genre – Contemporary / Domestic Fiction

Recommended Age – 16+



# ASHLAWN SCHOOL

Newsletter Issue Date:  
Friday 18 November 2022

Tel: 01788 573425

**TL** Proud to be part of the  
Transforming Lives  
EDUCATIONAL TRUST

Email: info@ashlawn.org.uk

Website: www.ashlawn.org.uk

**ASHLAWN SPORTS SHOUT OUT**

## U12 Year 7 Football

### League Champions

The Invincibles- On Tuesday night the Year 7 Football Team were crowned Rugby Schools District League champions. Winning every single league game!

Position	Yr 7	Played	Won	Drawn	Lost	GD	Pts
1st	ASH	6	6	0	0	22	24
2nd	PC	6	4	0	2	15	18
3rd	LSS	4	3	0	1	15	13
4th	HOUH	4	1	0	3	14	7
5th	AVS	6	0	1	5	-31	7
6th	HA	3	1	0	2	0	6
7th	BIL	3	0	1	2	-7	4

Well Done to all involved. Rudi, Noah 5, Noah 6, James O, Tobias, Zain, Karta, Lorie, Aiden, Aidan, Marley, Max, James C, Harry, Arthur, Fynn, Eben, Bobby, Alfie, Ollie and all others who have represented the school team.

**LIVERMORE** **RUDDOCK** **EVANS** **BROOKE** **WEBB ELLIS**



**ASHLAWN SPORTS SHOUT OUT**

## Warwickshire Schools Cross Country

Well Done to all of you! What a Great Achievement!!

Runners Representing Ashlawn were:

Lydia, Elsie, Ellen, Luca, Harry S, Harry P

Some special Shout Outs

Minor Girls  
Lydia - Yr 7 - 10th  
Elsie - Yr 7 - 12th

Minor Boys  
Luca - Yr 7 - 14th

Junior Boys  
Harry - Yr 9 - 21st

On Saturday 5th November students from Ashlawn competed in the Warwickshire Schools Cross Country Championships at Stratford School.

Students from Years 7 and 9 competed against schools from across the whole of Warwickshire. The weather was a fair and the course was clear but a little muddy. All students did fantastically well, doing themselves and the school proud.

**LIVERMORE** **RUDDOCK** **EVANS** **BROOKE** **WEBB ELLIS**



**ASHLAWN SPORTS SHOUT OUT**

## Warwickshire Schools Cross Country

### Team Selection CONGRATULATIONS

**WEBB ELLIS COLLEGE**

Lydia, Elsie and Ava have all been selected to Represent East Warwickshire

**RUDDOCK COLLEGE**

They will compete at the Inter County Championships on Saturday 18th November

**BROOKE COLLEGE**

**GOOD LUCK!**

**LIVERMORE** **RUDDOCK** **EVANS** **BROOKE** **WEBB ELLIS**



# ASHLAWN SCHOOL

Newsletter Issue Date:  
Friday 18 November 2022

Tel: 01788 573425

 Proud to be part of the  
Transforming Lives  
EDUCATIONAL TRUST

Email: [info@ashlawn.org.uk](mailto:info@ashlawn.org.uk)

Website: [www.ashlawn.org.uk](http://www.ashlawn.org.uk)



Ashlawn School celebrated **Children In Need** with a Non Uniform Day today. Students were invited to come dressed as themselves in exchange for a £1 donation.

At the time of counting Ashlawn has raised **£1436.10** and therefore we would like to thank all our staff and students for their kind donations.

Children in Need support many charities across the UK but closer to home they support 3 particular charities based in Rugby.

Circles - This is an equine therapy charity. Students with mental health concerns and behaviour concerns can be referred there.



ROSA - (Rape or Sexual abuse Support) helps students and adults who have experienced sexual harassment and violence.



KA KITS Academy - this project delivers sports activities for young people affected by poverty and disabled young people.

These charities combined received £200,000 of money from Children In Need last year and Ashlawn School has made referrals to all 3 projects. Every penny counts so if you would like to make a further donation please pop this into reception and we will add it to the total.

**Thank you for your continued support.**



# ASHLAWN SCHOOL

Newsletter Issue Date:  
Friday 18 November 2022

Tel: 01788 573425

**TL** Proud to be part of the  
Transforming Lives  
EDUCATIONAL TRUST

Email: [info@ashlawn.org.uk](mailto:info@ashlawn.org.uk)

Website: [www.ashlawn.org.uk](http://www.ashlawn.org.uk)



Rugby Police were in school this week to encourage students to speak out on knife crime and challenge friends and relatives who carry knives.

PC Elcock and PC Samra, along with 2 PCSO's, attended a number of KS3 Life Skills lessons and sixth form Criminology and Sociology lessons. They provided a safe space for students to open up about their concerns in the local community and ask questions about potential career routes into the police.



This is part of Operation Sceptre, a national campaign that raises awareness of the consequences of carrying a knife and aims to get knives off the streets. Throughout the week (14–20 November) people can anonymously surrender knives in bins at police stations in Nuneaton, Rugby, Leamington and Stratford. Rugby Station is open this Sunday (20th November). Throughout the week local policing teams will be running events aimed at raising awareness of knife crime.

Warwickshire Police is also urging students and their parents to have difficult conversations about the dangers and consequences that come with carrying a knife.

If you are worried and want help to keep either a young person or yourself safe, you can contact the following organisations:

- Childline counsellors can support young people 24 hours a day, you can call them on 0800 1111.
- The Prince's Trust can help provide support and opportunities for young people.
- Always call 999 if you are worried someone is at risk. The police are there to help and keep you safe.

## Communication

We welcome open communication with our parents and carers in our community. Can we ask that parents are aware that there is a 2 working day turn around for communication regarding your child. The in hours communication times are 8am – 5pm Monday – Friday. We will endeavour to respond to queries within this time frame.



# ASHLAWN SCHOOL

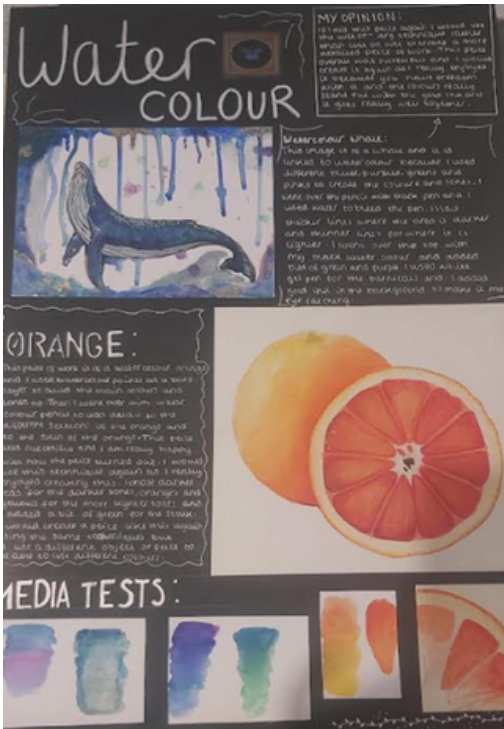
Newsletter Issue Date:  
Friday 18 November 2022

Tel: 01788 573425

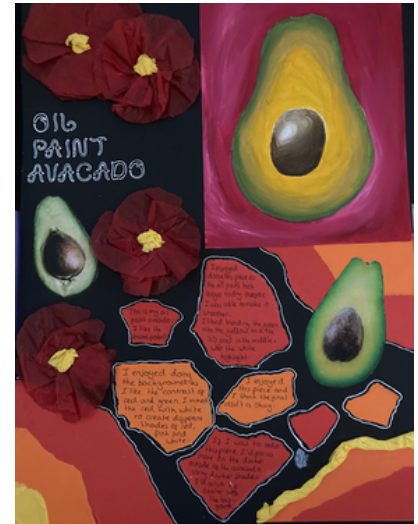
**TL** Proud to be part of the  
Transforming Lives  
EDUCATIONAL TRUST

Email: [info@ashlawn.org.uk](mailto:info@ashlawn.org.uk)

Website: [www.ashlawn.org.uk](http://www.ashlawn.org.uk)



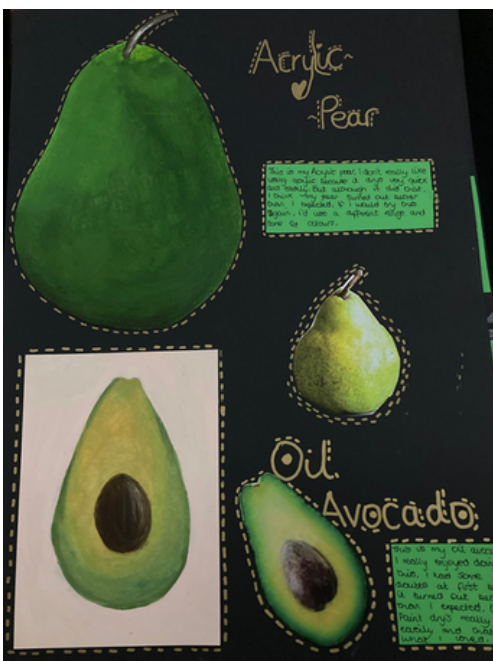
Stella



Grace



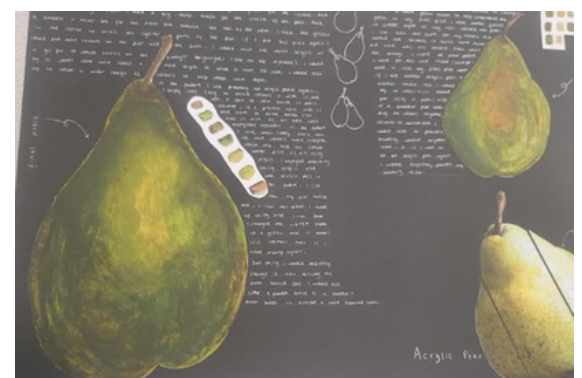
Molly



Annabel



Alyssia



Zoe





# ASHLAWN SCHOOL

Newsletter Issue Date:  
Friday 18 November 2022

Tel: 01788 573425

 Proud to be part of the  
Transforming Lives  
EDUCATIONAL TRUST

Email: [info@ashlawn.org.uk](mailto:info@ashlawn.org.uk)

Website: [www.ashlawn.org.uk](http://www.ashlawn.org.uk)

## Menu

WEEK COMMENCING 21 11 22



Monday	Tuesday	Wednesday	Thursday	Friday
Chicken curry with rice and a mini naan	Chicken fajita and spicy rice	Flatbread filled with lamb kebab and salad	Sweet and sour chicken bites, rice and sauce	Sausage and chips
Quorn curry with rice and a mini naan	Chicken fajita and spicy rice	Flatbread filled with flavored quorn and salad	Quorn sweet and sour with rice	Vegetarian burger and chips
Jacket potato and tuna	Pasta king - meat	Jacket potato and cheese	Pasta king - meat	Jacket potato and beans
Hot sausage roll	Pasta king - veg	Tomato and cheese pasta	Pasta king - veg	Chicken fillets
Bacon, lettuce and tomato sandwich	Cheese and ham toastie	Cheese and pickle sandwich	Beef burger	Ham salad sandwich
Cheese and tomato sandwich	Cheese and ham sandwich	Chicken and stuffing sandwich	Chicken, bacon and mayo sandwich	Cheese salad sandwich
	Tuna and cucumber sandwich		Egg and cress sandwich	

### Attendance and Punctuality

Good attendance and punctuality to school is vital if students are to succeed and reach their full potential. Every day that a student is late will impact their learning time in school.

We monitor attendance and punctuality very closely in order to ensure that ALL students arrive at school on time, ready to learn.

We expect ALL students to be in school by 8.40 am, ready to start form time at 8.45 am. If students arrive late to form time, they will be marked as late regardless of what time they were on site. If students arrive late on two occasions or more, then they will attend a same day detention for 15 minutes.

Although we want every student to achieve 100% attendance, we understand that there are times when they may not be able to come to school as they are really unwell. If this happens it is vital that you contact school via EDULINK or by phoning 01788 532831.

Please do not email individual teachers or their Head of Year.

If at any time you feel that you need support with your child's attendance or punctuality then you must talk to us.

Your child's Form Tutor and Head of Year are here to support them throughout their time in school.

Minutes Late Per Day	Days of Lost Learning
5	3.5
10	7
15	10.5
20	14
30	21

% Attendance	Days of Lost Learning
100	0
95	10
90	20
85	30
80	40 (8 school weeks)



# ASHLAWN SCHOOL

Newsletter Issue Date:  
Friday 18 November 2022  
Tel: 01788 573425

**TL** Proud to be part of the  
Transforming Lives  
EDUCATIONAL TRUST

Email: [info@ashlawn.org.uk](mailto:info@ashlawn.org.uk)

Website: [www.ashlawn.org.uk](http://www.ashlawn.org.uk)

## **Safeguarding Advice**

What to do if you are worried about your, or someone else's safety.

Tell a trusted adult at school.

We are here to help, and our team of Designated Safeguarding Leads will provide support. You can also call on the following number: 01788 573425.

If you are in immediate danger then phone 101 or 999.

Here are some other ways things you can get the help you need:

- Tell a trustworthy family member or safe adult who may be able to help you
- Call Childline on 0800 1111 and talk through how you are feeling and your concerns
- Email the Designated Safeguarding Leads at school at [safeguarding@ashlawn.org.uk](mailto:safeguarding@ashlawn.org.uk)
- Speak to Young Carers if you are looking after someone at home. Tel: 02476 217740
- Look online for support from the Family Information Service at [www.warwickshire.gov.uk/childrenandfamilies](http://www.warwickshire.gov.uk/childrenandfamilies)
- If you feel unsafe or in danger call the council helpline on 01926 414144

If you are struggling with your mental health and want some reassurance and advice, then contact your form tutor or Head of Year. They would love to hear from you and they will help alleviate your worries.

**Mrs Pountney**

**Assistant Principal and Designated Safeguarding Lead**

**Safeguarding is  
Everyone's  
Responsibility**

The Family Information Service can provide a wide range of information/support/ referrals for families in Warwickshire either via our helpline or on a face to face basis.

FIS Brokerage Service is a 1:1 early intervention service which can be used to support families with children age 0 to 25 living in Warwickshire to access services where there are barriers and/or complex needs.

To access this service please contact them using the methods below:

[fis@warwickshire.gov.uk](mailto:fis@warwickshire.gov.uk)

- [Twitter – @WarksFIS](https://twitter.com/WarksFIS)
- [Facebook – Warwickshire Family Information Service](https://www.facebook.com/WarwickshireFamilyInformationService)
- <https://www.warwickshire.gov.uk/children-families>

01926 742 274.

The Family Intervention Service can help you with topics such as:

- family relationships
- finance
- housing
- parenting support
- special educational needs and disabilities (SEND)
- childcare
- health and wellbeing

Please don't hesitate to get in touch. They are there to help!.

**Mrs Pountney**

**Assistant Principal**



## **Free Sanitary Items**

Students can collect free sanitary wear at school. They are available from Reception, Student Services and the PE changing rooms. Tampons and sanitary towels are available.

**Mrs Pountney**

**Assistant Principal**

## **Food Bank**

If you are struggling financially and would like a food parcel or food bank voucher, please contact Mrs Pountney or Mrs Lavery as we have a few food parcels left and we are happy to deliver.

